

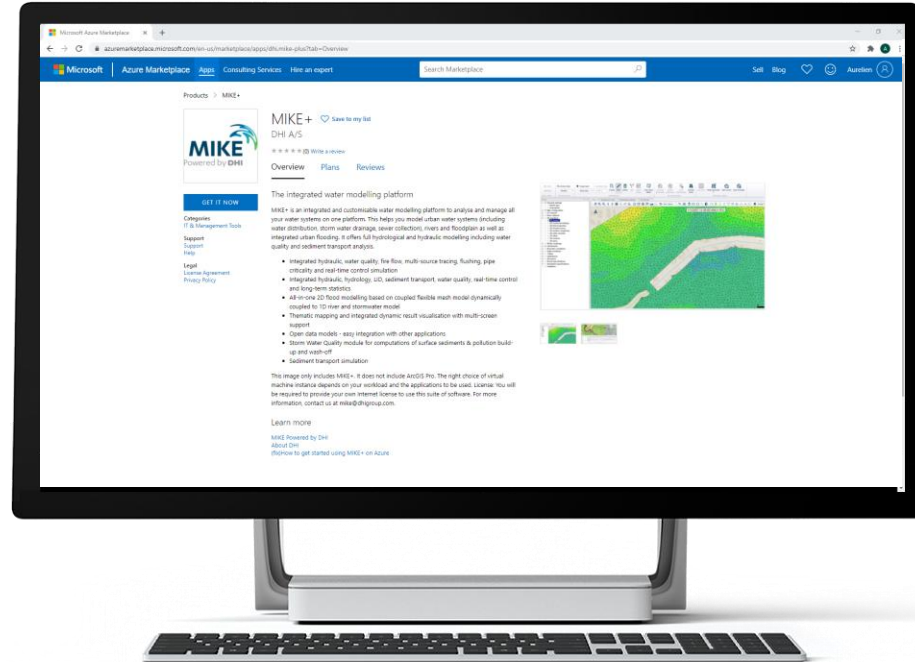
Step-by-step Guide

How to start a MIKE+ Virtual Machine from Microsoft Azure Marketplace

MIKE+ is now available on Azure Marketplace

What's required?

- Microsoft Azure account
- DHI internet license for MIKE+
If you choose "Bring your own license"



- Browse apps
- Get Started
- Analytics
- AI + Machine Learning
- Azure Active Directory
- Blockchain
- Compute
- Containers
- Databases
- Developer Tools
- DevOps
- Identity
- Integration
- Internet of Things
- IT & Management Tools
- Monitoring & Diagnostics
- Media
- Migration
- Mixed Reality
- Networking
- Security
- Storage
- Web

Trials: All
Operating System: All
Publisher: Partners

Find MIKE+ via the Marketplace Search Tool

All results

 MIKE Zero By DHI A/S MIKE Modelling Suite for Water Environment. Bring your own license Get it now	 MIKE+ By DHI A/S The integrated water modelling platform. Bring your own license Get it now	 MIKE Zero By DHI A/S MIKE Modelling Suite for Water Environment. Starts at \$12.00/hour Get it now	 MIKE+ By DHI A/S The integrated water modelling platform. Starts at \$8.00/hour Get it now	 MIKE URBAN+ By DHI A/S The integrated platform for advanced urban water modelling. Bring your own license Get it now
 FEFLOW By DHI A/S The all-in-one groundwater modelling solution. Bring your own license Get it now				

Click 'Get it Now' on the license type you want.

Browse apps

Get Started

- Analytics
- AI + Machine Learning
- Azure Active Directory
- Blockchain
- Compute
- Containers
- Databases
- Developer Tools
- DevOps
- Identity
- Integration
- Internet of Things
- IT & Management Tools
- Monitoring & Diagnostics
- Media
- Migration
- Mixed Reality
- Networking
- Security
- Storage
- Web

Trials: All | Operating System: All | Publisher: All | Pricing Model: All | Product Type: All | Reset filters

Results in All apps for mike+ (6)

 MIKE Zero By DHI A/S MIKE Modelling Environment.	 MIKE+	 MIKE URBAN+	 FEFLOW By DHI A/S The all-in-one groundwater modelling solution.
Bring your own license	Bring your own license	Bring your own license	Bring your own license
Get it now	Get it now	Get it now	Get it now

 Next By Next #designthinking #enterprise #cloud #application #innovation	 Microsoft Teams
Contact me	Contact me

Sign in to Microsoft Azure Marketplace

Enter the email address of the account you want to use when acquiring apps on Azure Marketplace.

ⓘ If possible, use your work or school account. If you log in with a Microsoft account, apps that require a work or school account will not be available.

Work, school or Microsoft account

Sign in

Don't have an account? [Sign up for a free account](#)

Login to your Microsoft Azure account if not already signed in.

Products > MIKE+

Select the MIKE+ version

Create this app in Azure

MIKE+
By DHI A/S

Software plan

MIKE+ 2023 Update 1

Pricing: Bring your own license + Azure infrastructure costs

Details: The integrated water modelling platform

This app requires some basic profile information. You have provided the information already so you're good to go! [Edit](#)

By clicking "Continue", I grant Microsoft permission to share my supplied contact information with the provider so that they can contact me regarding this product and related products. The shared information will be handled in accordance with the provider's terms and privacy statement.

Continue

Click Continue

Pricing information

Bring your own license
+ Azure infrastructure costs

Categories

IT & Management Tools
Compute

Support

Support
Help

Legal

License Agreement
Privacy Policy

The integrated water modelling platform

MIKE+ is an in
all your water
(including water
as well as inter
including water

- Integrat
- Integrat
- Integrat
- All-in-o
- coupled
- Themat
- support
- Open d
- Storm V
- build-up
- Sedime

This image only illustrates this. It does not indicate the size of the right choice of virtual machine instance depends on your workload and the applications to be used. License: You will be required to provide your own Internet license to use this suite of software. For more information, contact us at mike@dhigroup.com.

Learn more

MIKE Powered by DHI

About DHI

How to get started using MIKE+ on Azure

Home >

MIKE+ ✕
DHI A/S



MIKE+ [Add to Favorites](#)

DHI A/S | Virtual Machine

Plan

MIKE+ 2023 Update 1

Create

Start with a pre-set configuration

Click Create

Want to deploy programmatically? [Get started](#)

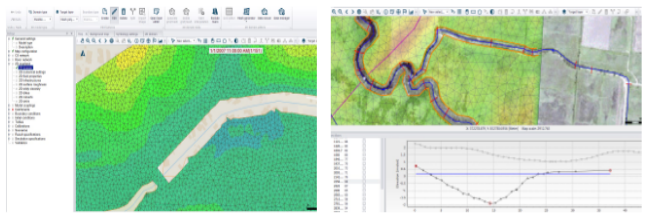
Overview Plans + Pricing Usage Information + Support Ratings + Reviews

MIKE+ is an integrated and customisable water modelling platform to analyse and manage all your water systems on one platform. This helps you model urban water systems (including water distribution, storm water drainage, sewer collection), rivers and floodplain as well as integrated urban flooding. It offers full hydrological and hydraulic modelling including water quality and sediment transport analysis.

- Integrated hydraulic, water quality, fire flow, multi-source tracing, flushing, pipe criticality and real-time control simulation
- Integrated hydraulic, hydrology, LID, sediment transport, water quality, real-time control and long-term statistics
- All-in-one 2D flood modelling based on coupled flexible mesh model dynamically coupled to 1D river and stormwater model
- Thematic mapping and integrated dynamic result visualisation with multi-screen support
- Open data models - easy integration with other applications
- Storm Water Quality module for computations of surface sediments & pollution build-up and wash-off
- Sediment transport simulation

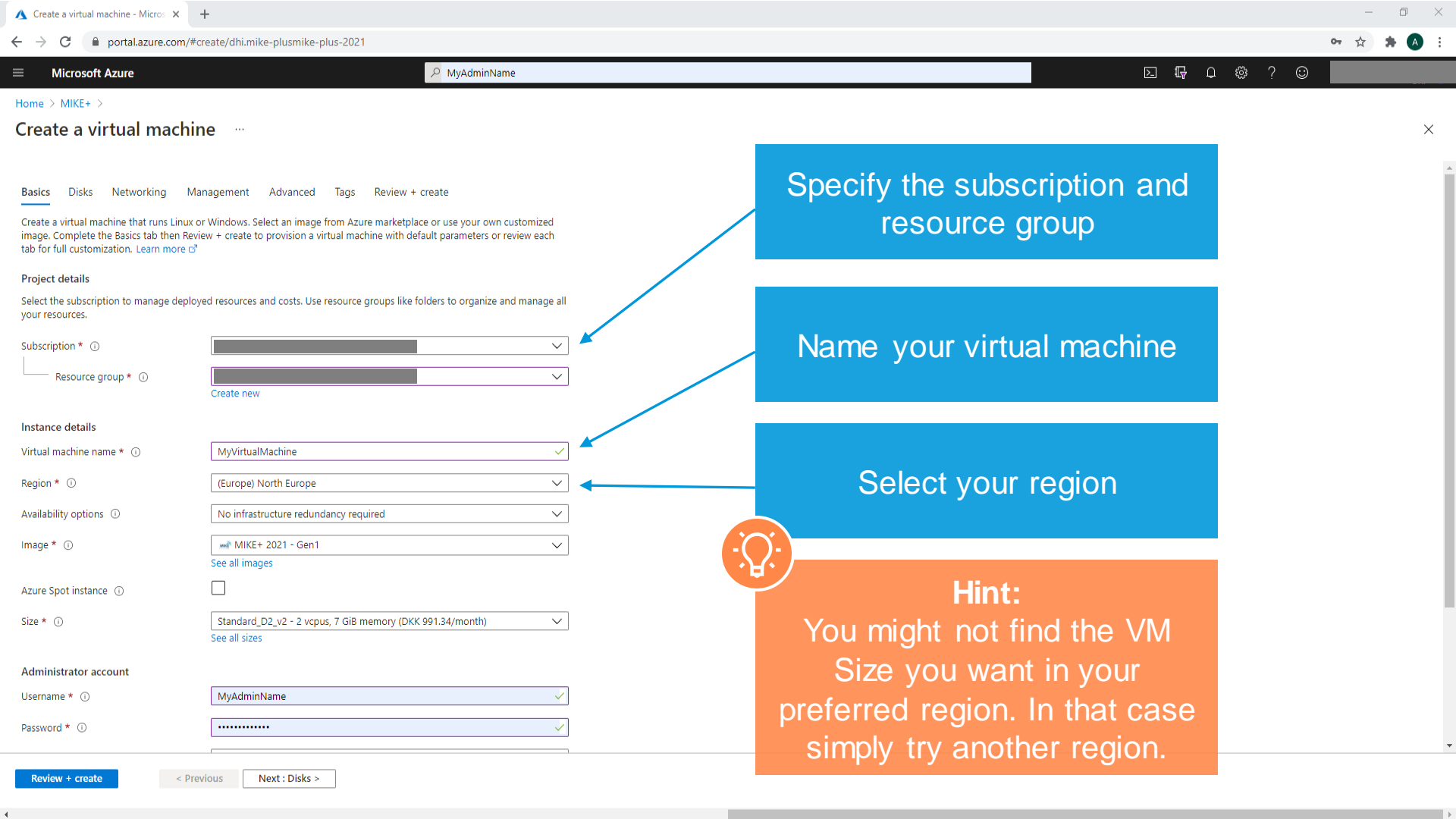
This image only includes MIKE+. It does not include ArcGIS Pro. The right choice of virtual machine instance depends on your workload and the applications to be used. License: You will be required to provide your own internet license to use this suite of software. For more information, contact us at mike@dhiigroup.com.

Media



[See All](#)

Your account will show here



Specify the subscription and resource group

Name your virtual machine

Select your region



Hint:

You might not find the VM Size you want in your preferred region. In that case simply try another region.

Create a virtual machine

- Basics
- Disks
- Networking
- Management
- Advanced
- Tags
- Review + create

Create a virtual machine that runs Linux or Windows. Select an image from Azure marketplace or use your own customized image. Complete the Basics tab then Review + create to provision a virtual machine with default parameters or review each tab for full customization. [Learn more](#)

Project details
Select the subscription to manage deployed resources and costs. Use resource groups like folders to organize and manage all your resources.

Subscription *

Resource group * [Create new](#)

Instance details

Virtual machine name *

Region *

Availability options

Image * [See all images](#)

Azure Spot instance

Size * [See all sizes](#)

Administrator account

Username *

Password *

[Home](#) > [MIKE+](#) >

Create a virtual machine

Instance details

Virtual machine name *

Region *

(Europe) UK South

Availability options

Availability zone

Availability zone *

Zones 1

You can now select multiple zones. Selecting multiple zones will create one VM per zone. [Learn more](#)

Security type

Trusted launch virtual machines

[Configure security features](#)

Image *

MIKE+ 2023 Update 1 - x64 Gen2

[See all images](#) | [Configure VM generation](#)

This image is not compatible with the selected security type. To keep Trusted launch virtual machines, select a compatible image. Otherwise, change your security type back to Standard.

VM architecture

 Arm64 x64

Arm64 is not supported with the selected image.

Run with Azure Spot discount

Size *

Standard_D8s_v5 - 8 vcpus, 32 GiB memory (\$592.76/month)

[See all sizes](#)

Administrator account

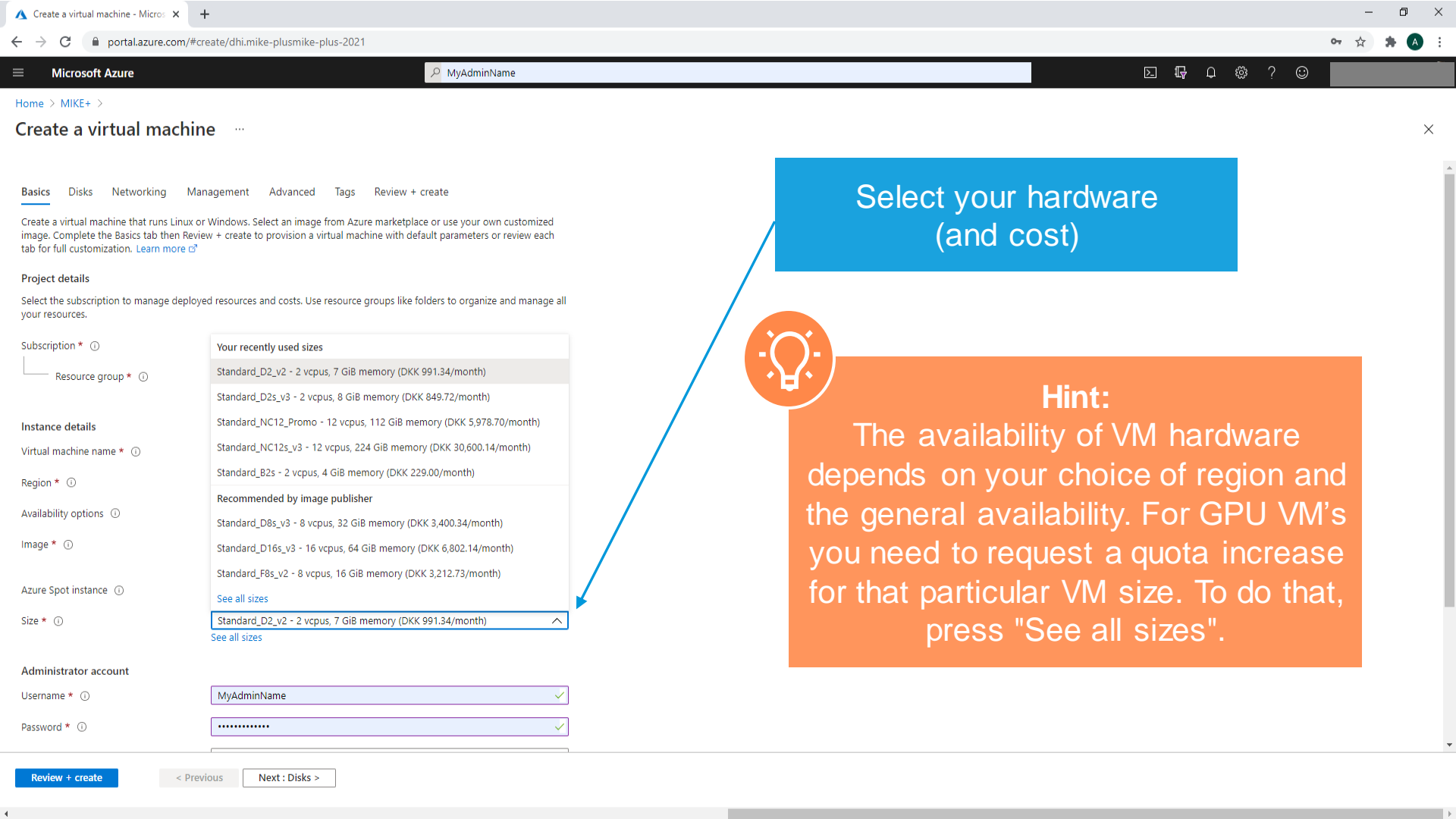
Username *



Hint:

If you encounter this message simply select 'Standard' Security type.

[Review + create](#)[< Previous](#)[Next : Disks >](#)



Select your hardware
(and cost)



Hint:
The availability of VM hardware depends on your choice of region and the general availability. For GPU VM's you need to request a quota increase for that particular VM size. To do that, press "See all sizes".

Your recently used sizes

- Standard_D2_v2 - 2 vcpus, 7 GiB memory (DKK 991.34/month)
- Standard_D2s_v3 - 2 vcpus, 8 GiB memory (DKK 849.72/month)
- Standard_NC12_Promo - 12 vcpus, 112 GiB memory (DKK 5,978.70/month)
- Standard_NC12s_v3 - 12 vcpus, 224 GiB memory (DKK 30,600.14/month)
- Standard_B2s - 2 vcpus, 4 GiB memory (DKK 229.00/month)

Recommended by image publisher

- Standard_D8s_v3 - 8 vcpus, 32 GiB memory (DKK 3,400.34/month)
- Standard_D16s_v3 - 16 vcpus, 64 GiB memory (DKK 6,802.14/month)
- Standard_F8s_v2 - 8 vcpus, 16 GiB memory (DKK 3,212.73/month)

[See all sizes](#)

Standard_D2_v2 - 2 vcpus, 7 GiB memory (DKK 991.34/month) ^

[See all sizes](#)

Review + create

< Previous

Next: Disks >

Select a VM size

Search by VM size...

Display cost: **Monthly** vCPUs: **All** RAM (GiB): **All** Type: **GPU** Add filter

Showing 41 of 678 VM sizes. | Subscription: DHI-MDD-OPERATIONS | Region: UK South | Current size: Standard_D8s_v5 | Image: FF

VM Size ↑↓	Type ↑↓	vCPUs ↑↓	RAM (GiB) ↑↓	Data disks
Other sizes				
Size not available See the info bubble next to a size for details on availability				
Insufficient quota - family limit Family vCPUs are insufficient to deploy these sizes				
NV4as_v4 Request quota	GPU	4	14	8
NV6ads_A10_v5 Request quota	GPU	6	55	4
NV8as_v4 Request quota	GPU	8	28	16
NV12ads_A10_v5 Request quota	GPU	12	110	8
NV16as_v4 Request quota	GPU	16	56	32
NV32as_v4 Request quota	GPU	32	112	32
NV36ads_A10_v5 Request quota	GPU	36	440	32
NV36adms_A10_v5 Request quota	GPU	36	880	32
NC64as_T4_v3 Request quota	GPU	64	440	32
NV72ads_A10_v5 Request quota	GPU	72	880	32
NV18ads_A10_v5 Request quota	GPU	18	220	16
Unsupported generation The VM generation selected is not supported for these sizes				
Availability zone restriction Sizes are not supported in zone 1				

If you want a GPU VM you need to request a quota.

Before deciding on which GPU VM you want to request a quota increase for you need to verify that it uses an nvidia GPU. Requesting a quota does not guarantee that you will get it: If it is not available you will need to try in another region.



Hint: Microsoft has online documentaion about what their different VM Sizes have in terms of GPU hardware.

Create a virtual machine ...

- Basics
- Disks
- Networking**
- Management
- Monitoring
- Advanced
- Tags
- Review + create

Define network connectivity for your virtual machine by configuring network interface card (NIC) settings. You can control ports, inbound and outbound connectivity with security group rules, or place behind an existing load balancing solution. [Learn more](#)

Network interface

When creating a virtual machine, a network interface will be created for you.

Virtual network * [Create new](#)

Subnet *

Public IP [Create new](#)

NIC network security group None Basic Advanced

Public inbound ports * None Allow selected ports

Select inbound ports *

⚠ This will allow all IP addresses to access your virtual machine. This is only recommended for testing. Use the Advanced controls in the Networking tab to create rules to limit inbound traffic to known IP addresses.

Delete public IP and NIC when VM is deleted

Enable accelerated networking

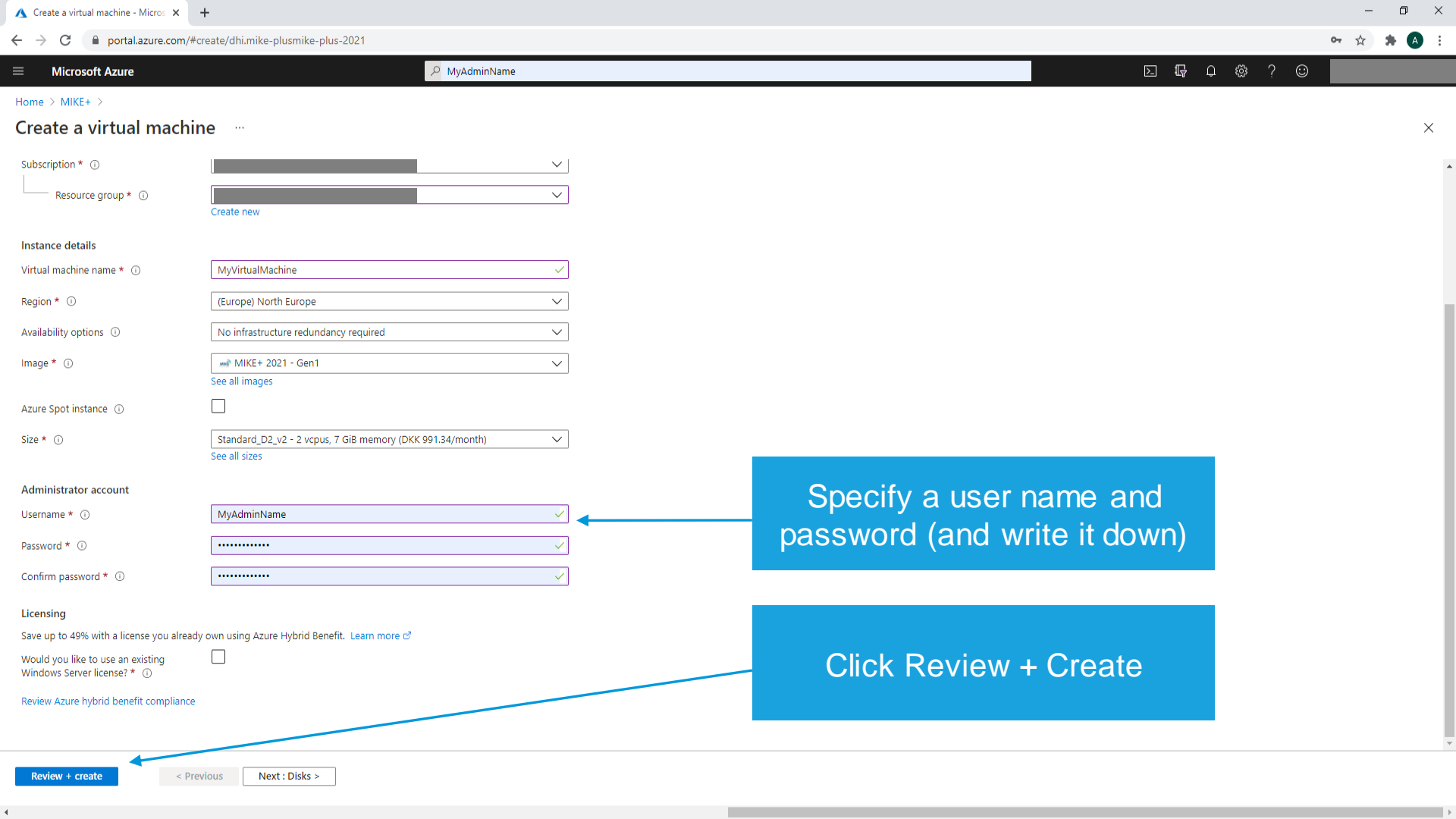
The selected image does not support accelerated networking.

Under 'Networking' make sure the VM has a Public IP so you are able to connect to it after creating

Review + create

< Previous

Next : Management >



Home > MIKE+ >

Create a virtual machine

Subscription * ⓘ

Resource group * ⓘ [Create new](#)

Instance details

Virtual machine name * ⓘ ✓

Region * ⓘ ✓

Availability options ⓘ ✓

Image * ⓘ ✓ [See all images](#)

Azure Spot instance ⓘ

Size * ⓘ ✓ [See all sizes](#)

Administrator account

Username * ⓘ ✓

Password * ⓘ ✓

Confirm password * ⓘ ✓

Licensing

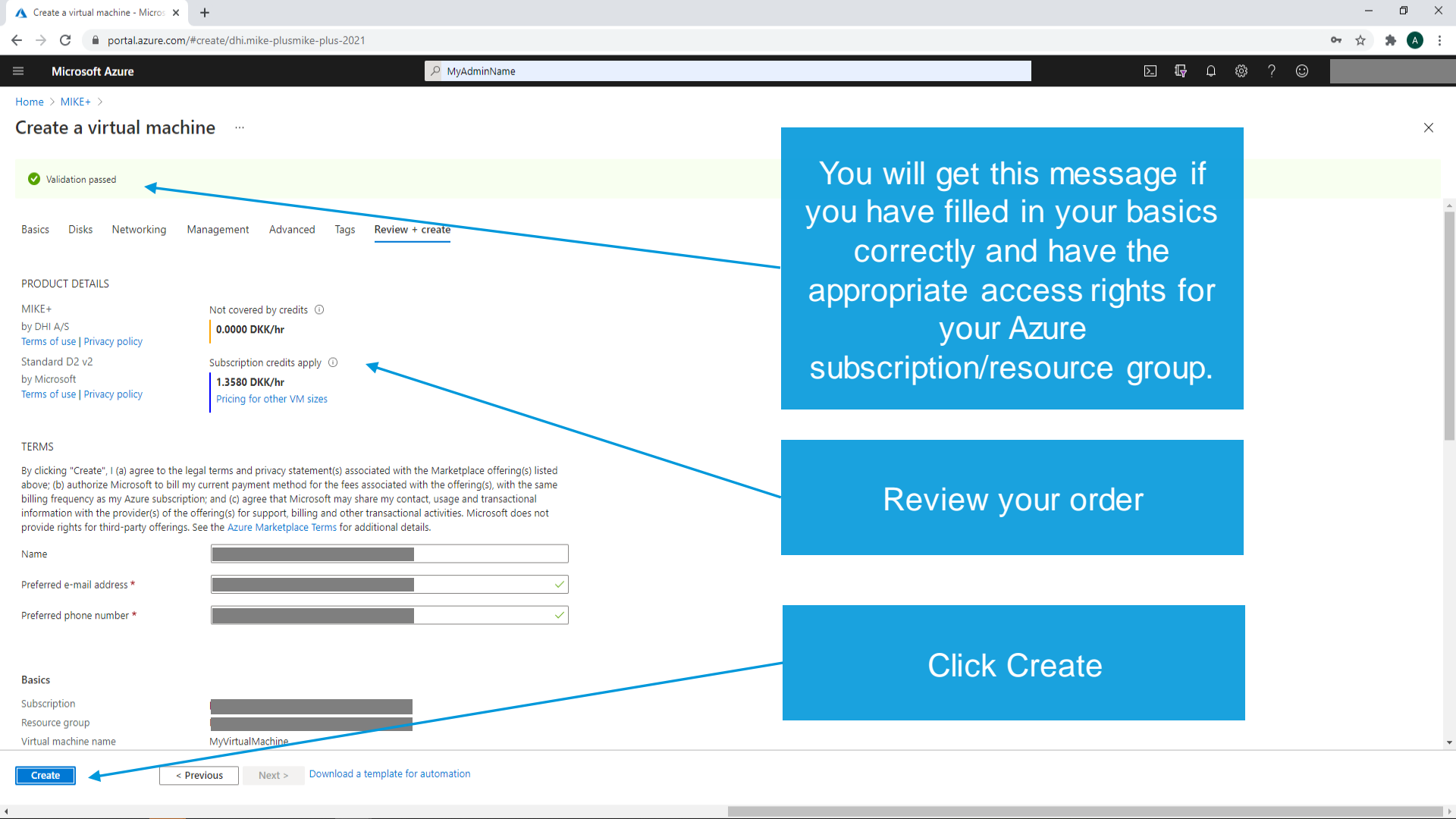
Save up to 49% with a license you already own using Azure Hybrid Benefit. [Learn more](#) ⓘ

Would you like to use an existing Windows Server license? * ⓘ

[Review Azure hybrid benefit compliance](#)

Specify a user name and password (and write it down)

Click Review + Create



You will get this message if you have filled in your basics correctly and have the appropriate access rights for your Azure subscription/resource group.

Review your order

Click Create

Validation passed

Basics Disks Networking Management Advanced Tags Review + create

PRODUCT DETAILS

MIKE+
by DHI A/S
Terms of use | Privacy policy
Not covered by credits
0.0000 DKK/hr
Subscription credits apply
1.3580 DKK/hr
Pricing for other VM sizes

TERMS

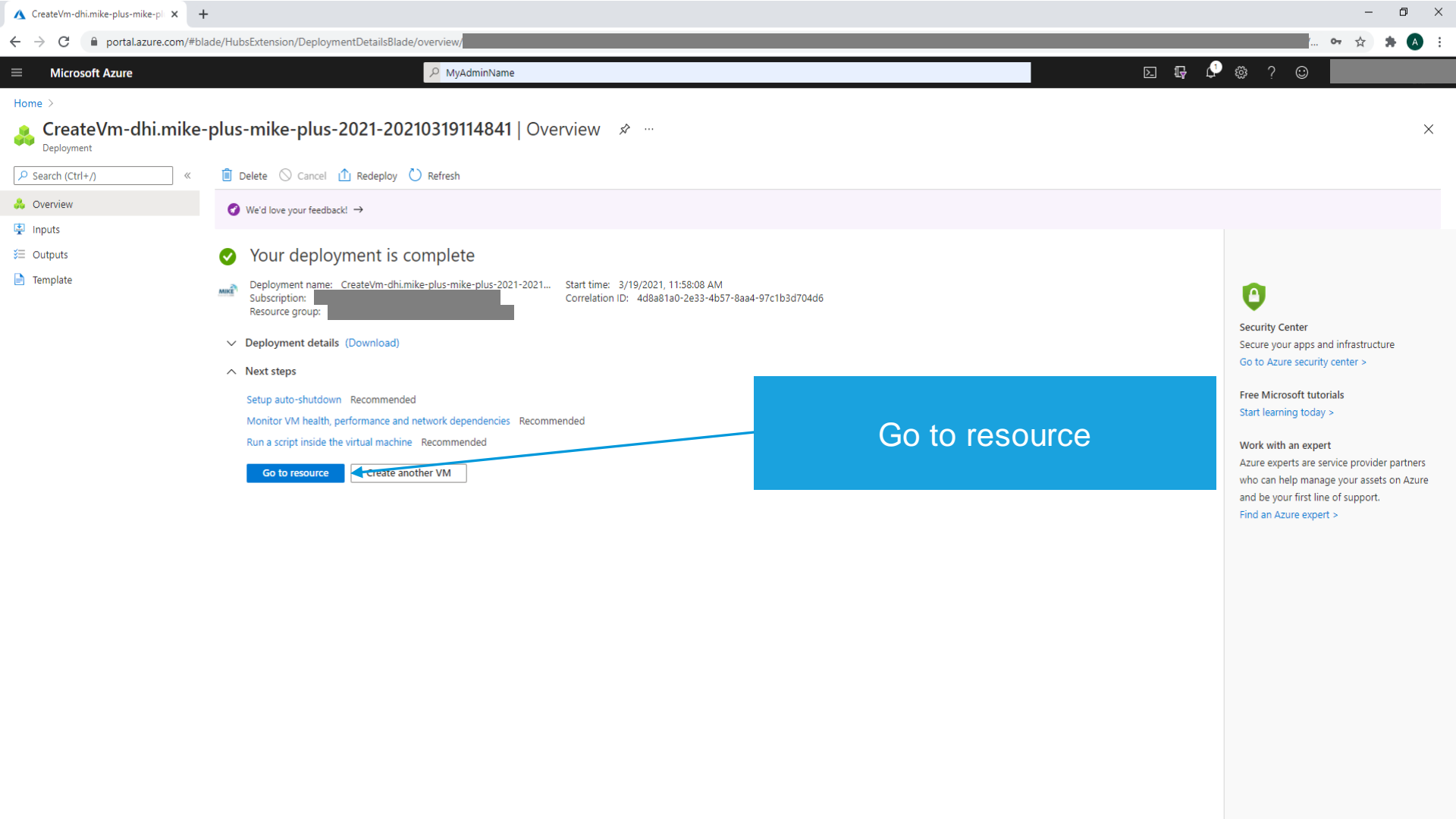
By clicking "Create", I (a) agree to the legal terms and privacy statement(s) associated with the Marketplace offering(s) listed above; (b) authorize Microsoft to bill my current payment method for the fees associated with the offering(s), with the same billing frequency as my Azure subscription; and (c) agree that Microsoft may share my contact, usage and transactional information with the provider(s) of the offering(s) for support, billing and other transactional activities. Microsoft does not provide rights for third-party offerings. See the Azure Marketplace Terms for additional details.

Name
Preferred e-mail address *
Preferred phone number *

Basics

Subscription
Resource group
Virtual machine name
MyVirtualMachine

Create < Previous Next > Download a template for automation



CreateVm-dhi.mike-plus-mike-plus-2021-20210319114841 | Overview

Search (Ctrl+/) Delete Cancel Redeploy Refresh

- Overview
- Inputs
- Outputs
- Template

We'd love your feedback! →

Your deployment is complete

Deployment name: CreateVm-dhi.mike-plus-mike-plus-2021-2021... Start time: 3/19/2021, 11:58:08 AM
 Subscription: [redacted] Correlation ID: 4d8a81a0-2e33-4b57-8aa4-97c1b3d704d6
 Resource group: [redacted]

Deployment details (Download)

Next steps

- Setup auto-shutdown Recommended
- Monitor VM health, performance and network dependencies Recommended
- Run a script inside the virtual machine Recommended

[Go to resource](#)
[Create another VM](#)

Go to resource

Security Center
Secure your apps and infrastructure
[Go to Azure security center >](#)

Free Microsoft tutorials
Start learning today >

Work with an expert
Azure experts are service provider partners who can help manage your assets on Azure and be your first line of support.
[Find an Azure expert >](#)

portal.azure.com/#@dhigroup.onmicrosoft.com/resource/subscriptions/... MyAdminName

Microsoft Azure

Home > CreateVm-dhi.mike-plus-mike-plus-2021-20210319114841 >

MyVirtualMachine

Virtual machine

Search (Ctrl+/) Connect Start Restart Stop Capture Delete Refresh Open in mobile

Overview Activity log Access control (IAM) Tags Diagnose and solve problems Settings Networking Connect Disks Size Security Advisor recommendations Extensions Continuous delivery Availability + scaling Configuration Identity Properties Locks Operations Bastion Auto-shutdown Backup Disaster recovery

Essentials

Resource group (change) : [redacted]
Status : Running
Location : North Europe
Subscription (change) : [redacted]
Subscription ID : [redacted]
Tags (change) : [Click here to add tags](#)

Operating system : Windows
Size : Standard D2 v2 (2 vcpus, 7 GiB memory)
Public IP address : [redacted]
Virtual network/subnet : [redacted]
DNS name : [Configure](#)

JSON View

Properties

Virtual machine	
Computer name	MyVirtualMachin
Operating system	Windows
Publisher	dhi
Offer	mike-plus
Plan	mike-plus-2021
VM generation	V1
Agent status	Not Ready
Agent version	Unknown
Host group	None
Host	-
Proximity placement group	-
Colocation status	N/A

Availability + scaling

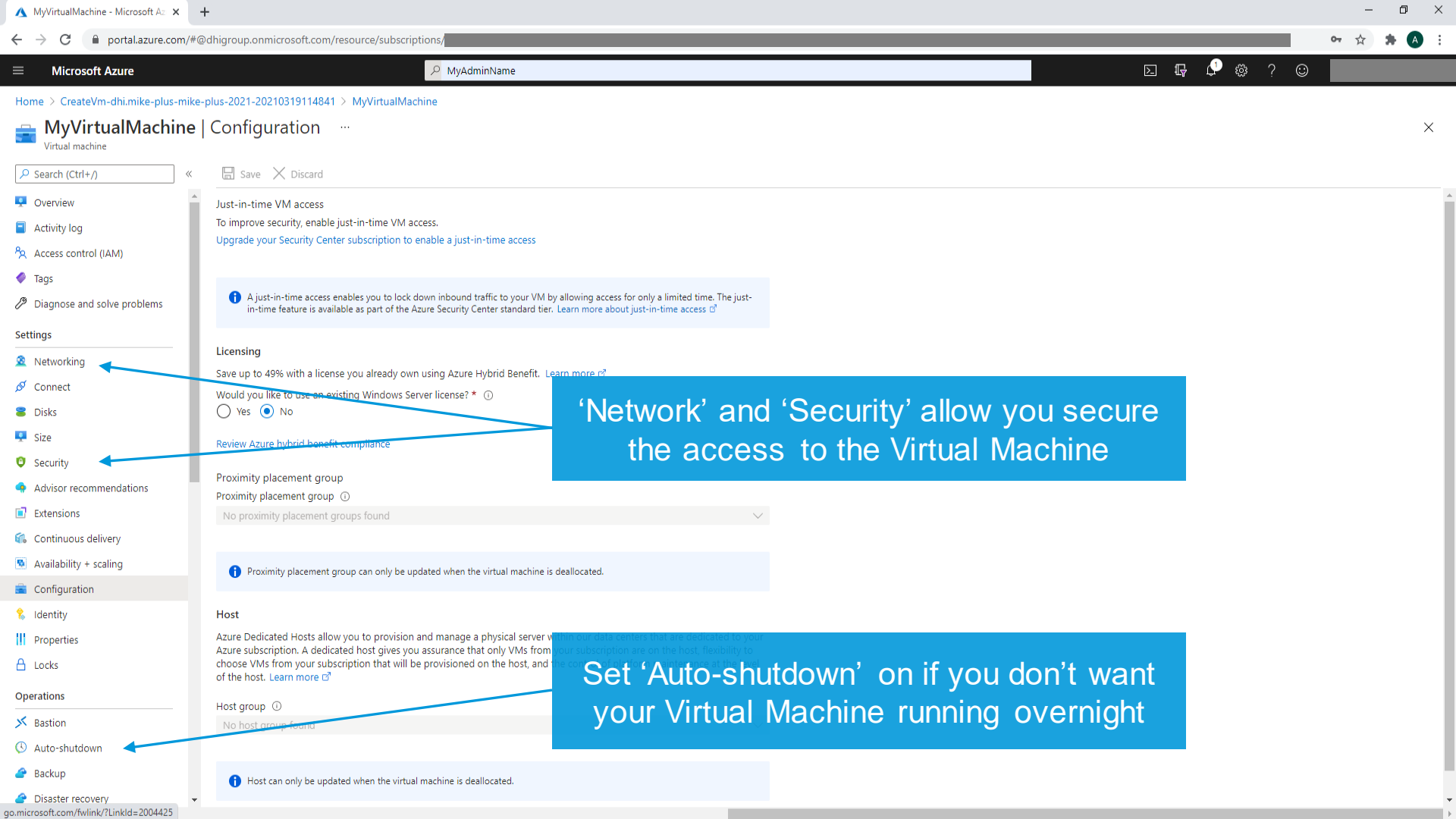
Availability zone	-
Scale Set	-

Extensions

Azure disk encryption	Not enabled
Ephemeral OS disk	N/A
Data disks	0

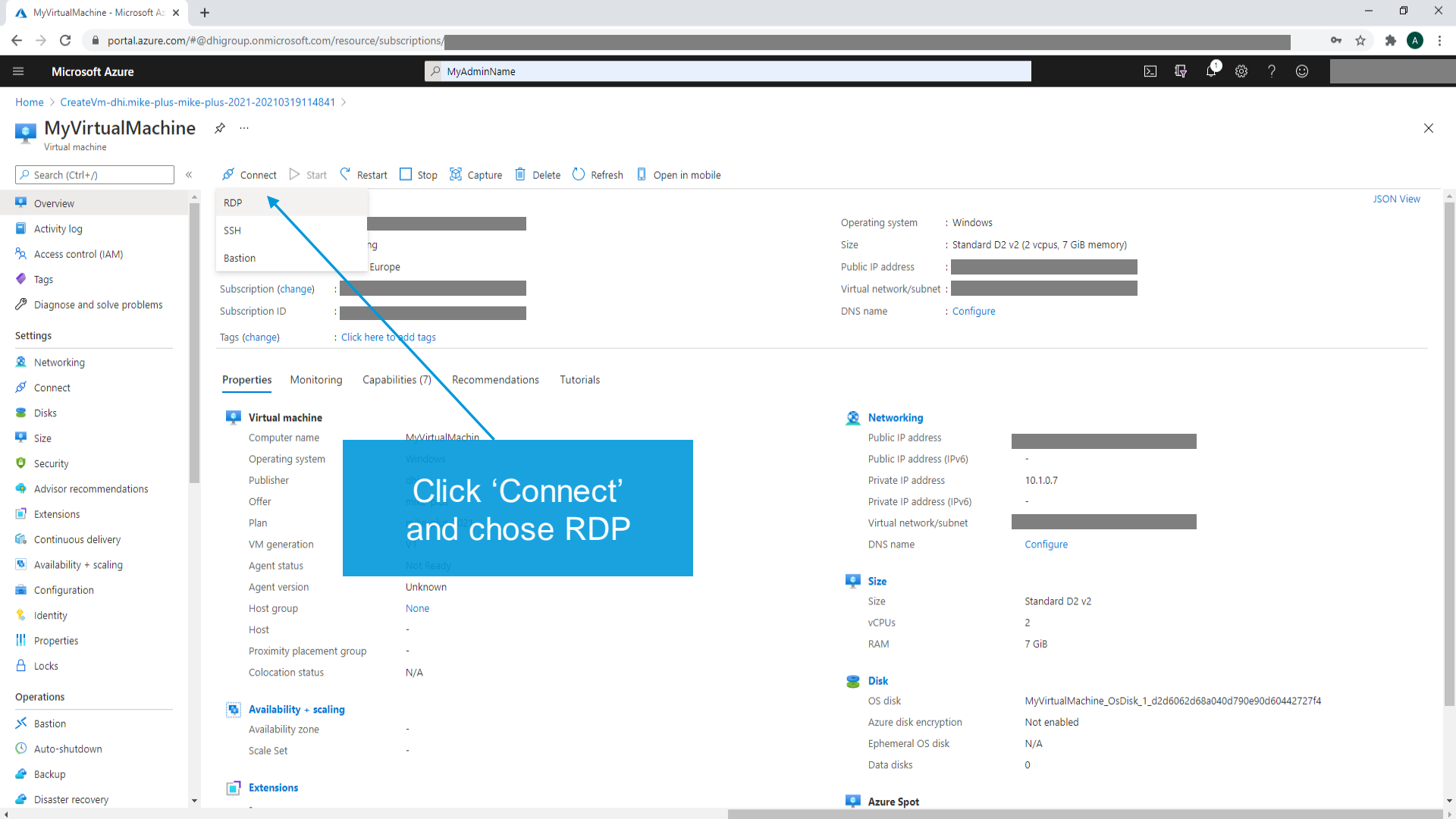
Azure Spot

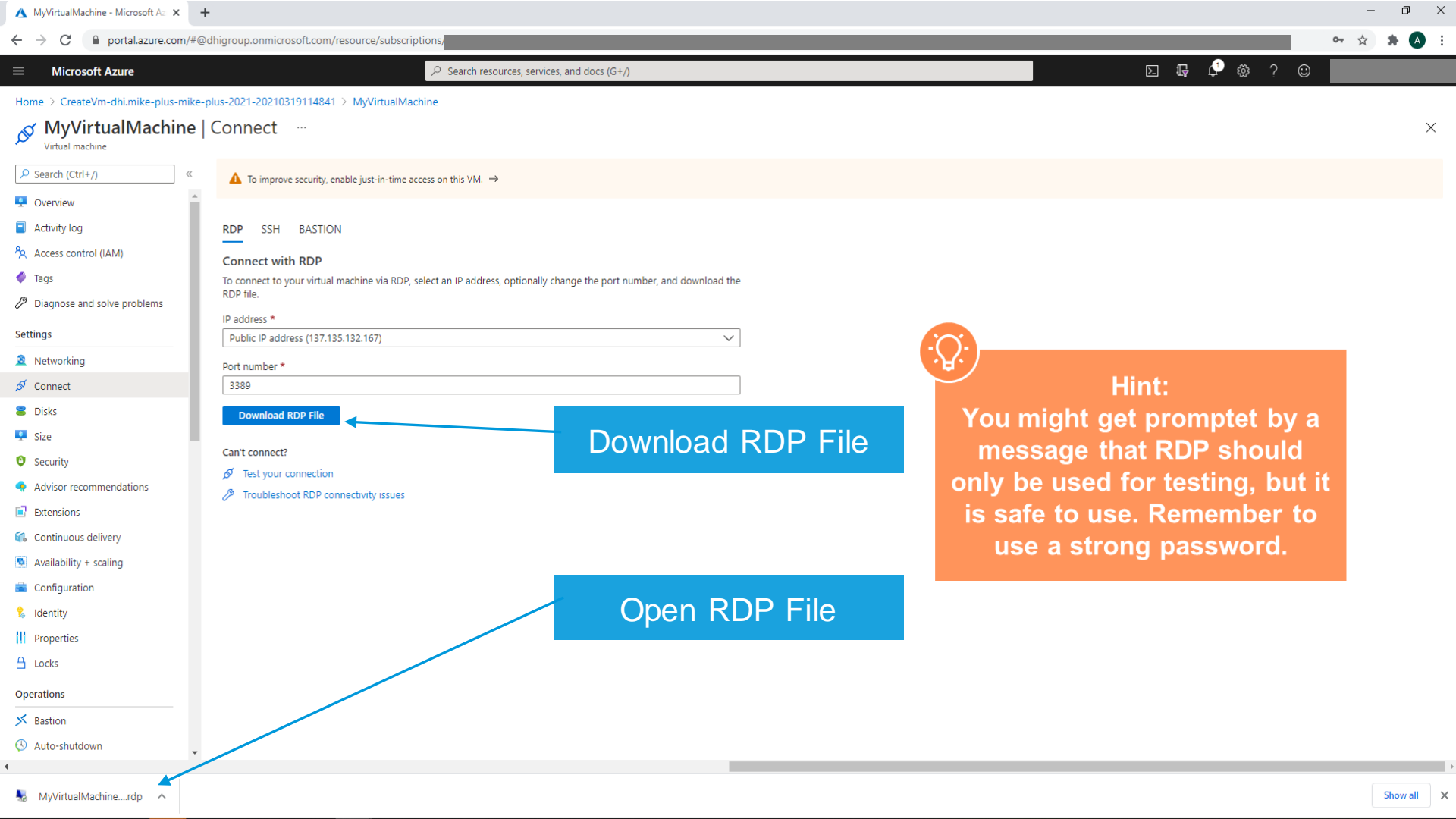
Hint:
This is your new VM dashboard where you can monitor/control the instance. Make sure to **stop** the VM from here when you are not using it: Shutting it down inside Windows will not “deallocate” it and you will still be paying for it. Once your VM is “deallocated” you are only paying for the storage.



'Network' and 'Security' allow you secure the access to the Virtual Machine

Set 'Auto-shutdown' on if you don't want your Virtual Machine running overnight





MyVirtualMachine | Connect

Virtual machine

Search (Ctrl+)

- Overview
- Activity log
- Access control (IAM)
- Tags
- Diagnose and solve problems
- Settings
- Networking
- Connect**
- Disks
- Size
- Security
- Advisor recommendations
- Extensions
- Continuous delivery
- Availability + scaling
- Configuration
- Identity
- Properties
- Locks
- Operations
- Bastion
- Auto-shutdown

To improve security, enable just-in-time access on this VM. →

RDP SSH BASTION

Connect with RDP

To connect to your virtual machine via RDP, select an IP address, optionally change the port number, and download the RDP file.

IP address *
Public IP address (137.135.132.167)

Port number *
3389

Download RDP File

Download RDP File

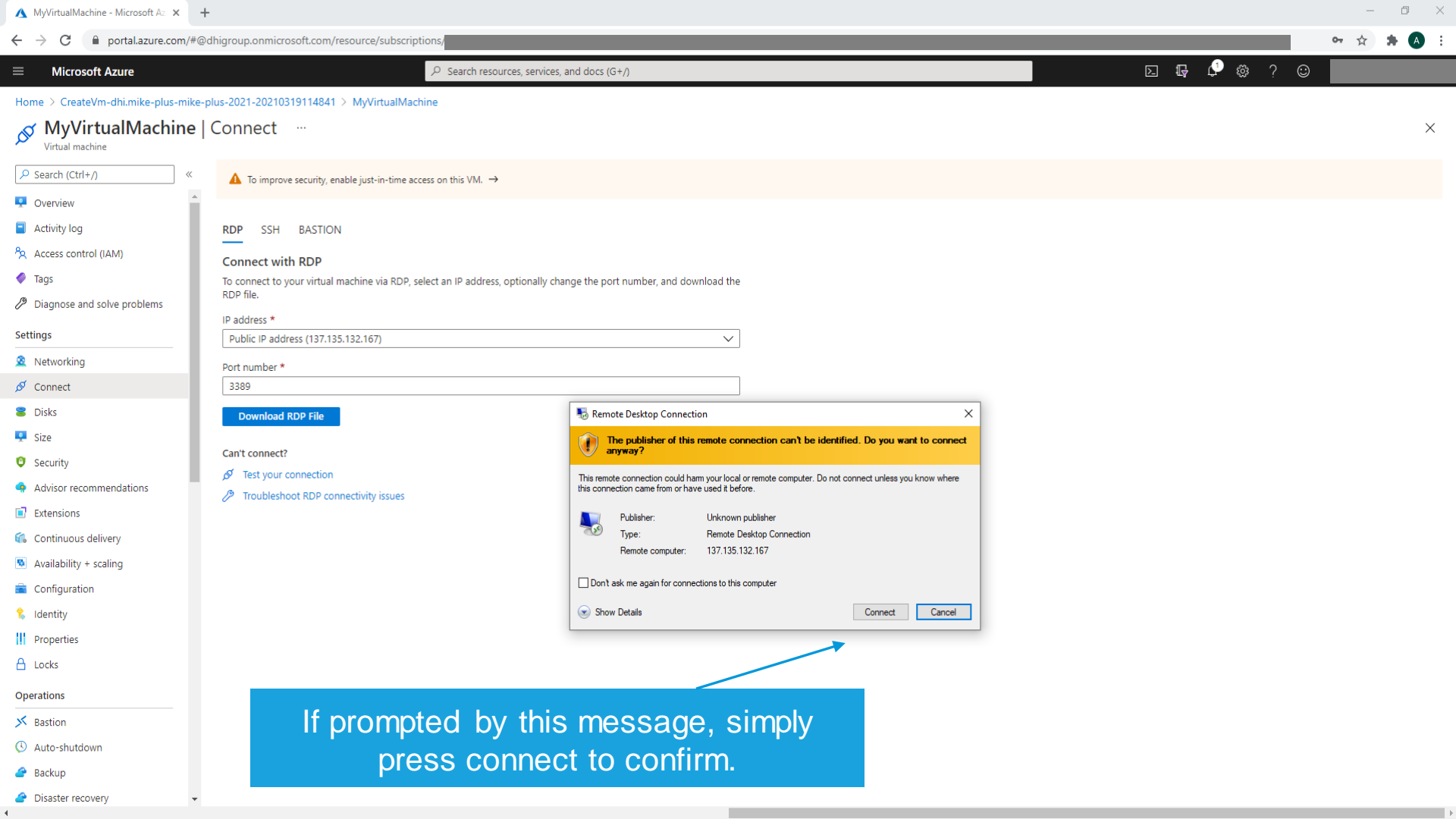
Can't connect?

- Test your connection
- Troubleshoot RDP connectivity issues

Open RDP File



Hint:
You might get prompted by a message that RDP should only be used for testing, but it is safe to use. Remember to use a strong password.



MyVirtualMachine | Connect

Search (Ctrl+.)

- Overview
- Activity log
- Access control (IAM)
- Tags
- Diagnose and solve problems
- Settings
- Networking
- Connect
- Disks
- Size
- Security
- Advisor recommendations
- Extensions
- Continuous delivery
- Availability + scaling
- Configuration
- Identity
- Properties
- Locks
- Operations
- Bastion
- Auto-shutdown
- Backup
- Disaster recovery

To improve security, enable just-in-time access on this VM. →

RDP SSH BASTION

Connect with RDP

To connect to your virtual machine via RDP, select an IP address, optionally change the port number, and download the RDP file.

IP address *
Public IP address (137.135.132.167)

Port number *
3389

Download RDP File

- Can't connect?
- Test your connection
 - Troubleshoot RDP connectivity issues

Remote Desktop Connection

The publisher of this remote connection can't be identified. Do you want to connect anyway?

This remote connection could harm your local or remote computer. Do not connect unless you know where this connection came from or have used it before.

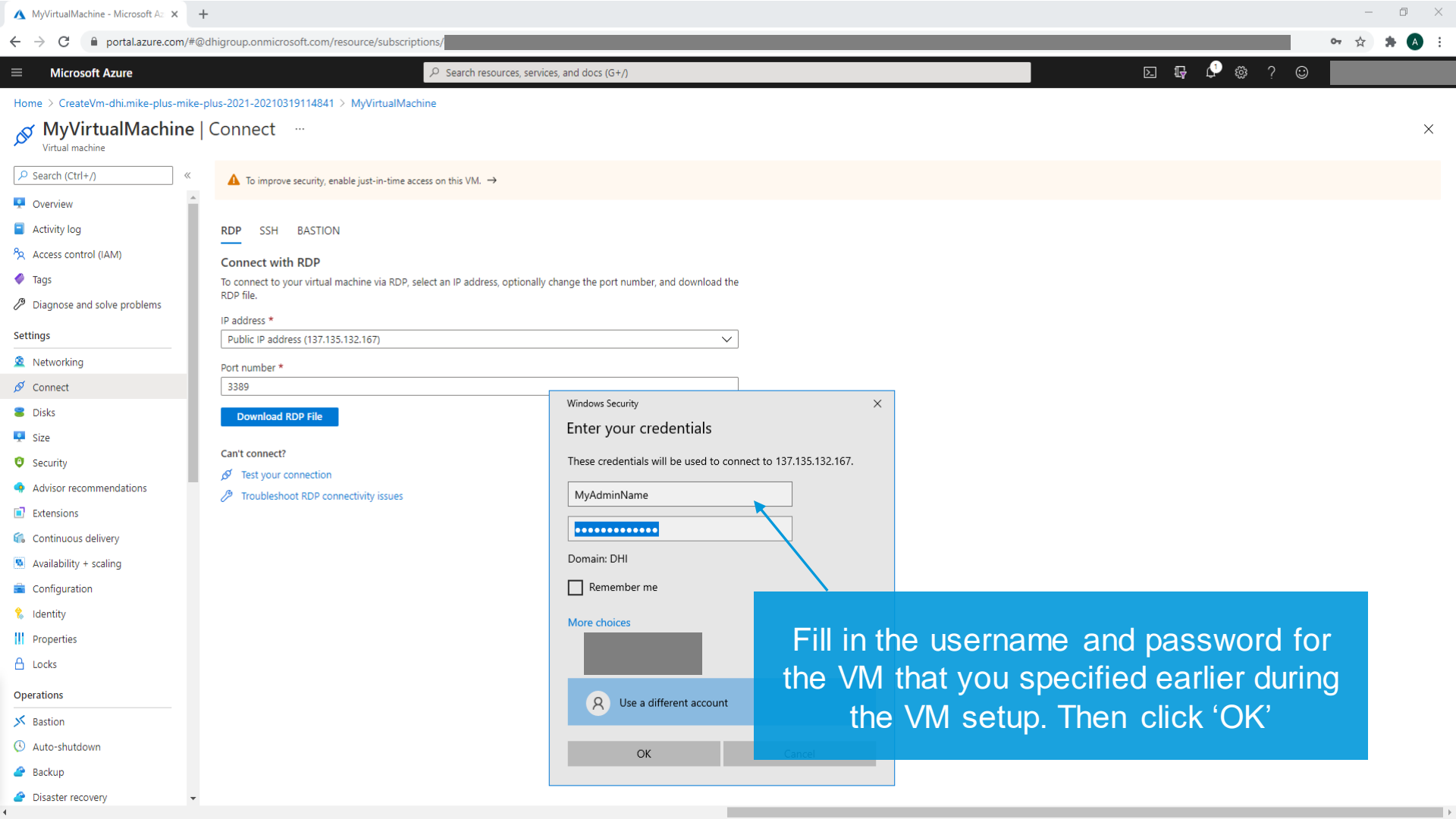
Publisher:	Unknown publisher
Type:	Remote Desktop Connection
Remote computer:	137.135.132.167

Don't ask me again for connections to this computer

Show Details

Connect Cancel

If prompted by this message, simply press connect to confirm.



To improve security, enable just-in-time access on this VM. →

RDP SSH BASTION

Connect with RDP

To connect to your virtual machine via RDP, select an IP address, optionally change the port number, and download the RDP file.

IP address *
Public IP address (137.135.132.167)

Port number *
3389

Download RDP File

Can't connect?
[Test your connection](#)
[Troubleshoot RDP connectivity issues](#)

Windows Security

Enter your credentials

These credentials will be used to connect to 137.135.132.167.

MyAdminName

.....

Domain: DHI

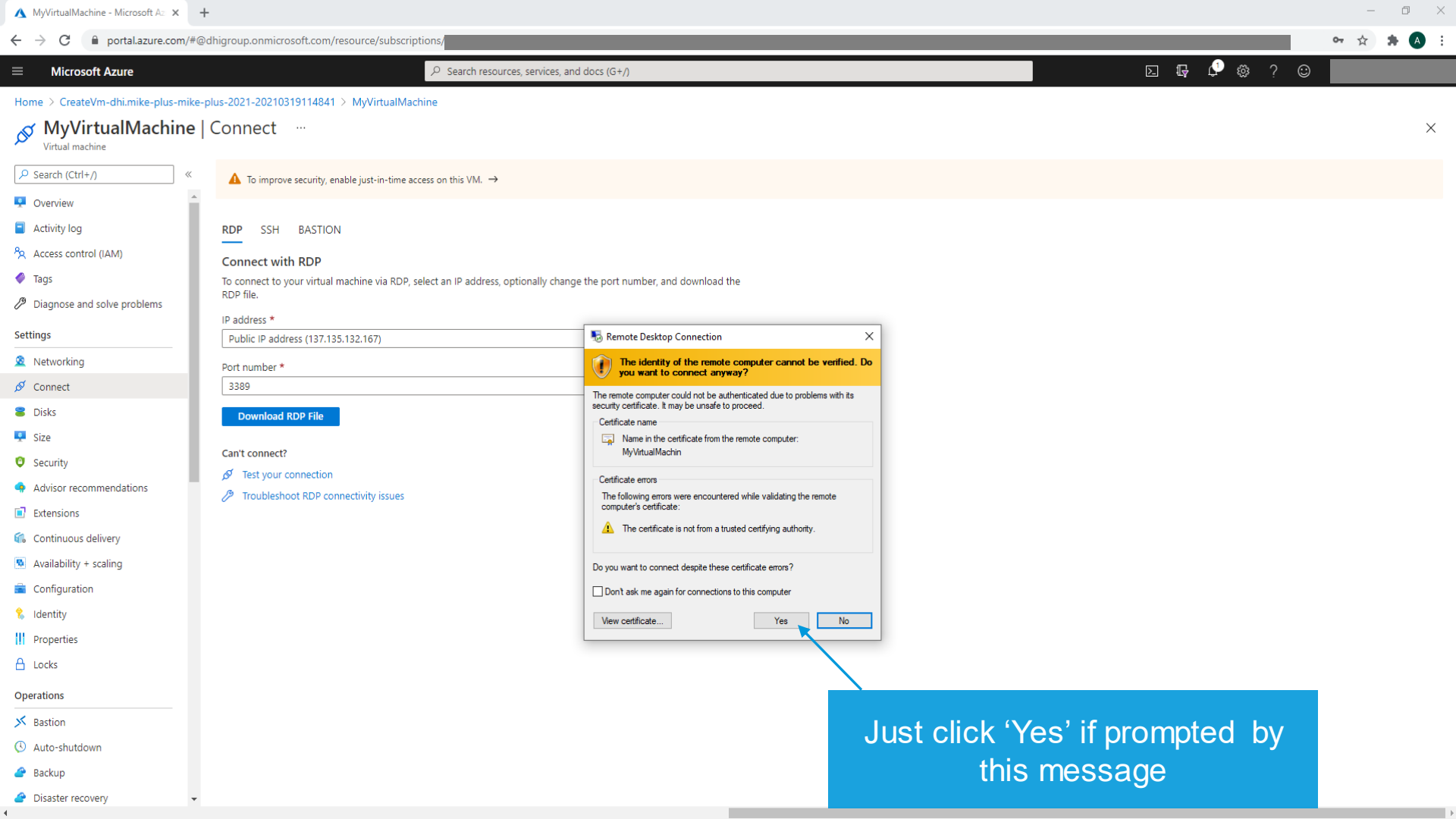
Remember me

More choices

Use a different account

OK Cancel

Fill in the username and password for the VM that you specified earlier during the VM setup. Then click 'OK'



⚠ To improve security, enable just-in-time access on this VM. →

RDP SSH BASTION

Connect with RDP

To connect to your virtual machine via RDP, select an IP address, optionally change the port number, and download the RDP file.

IP address *

Public IP address (137.135.132.167)

Port number *

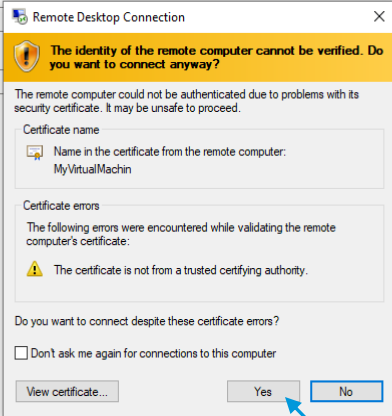
3389

Download RDP File

Can't connect?

Test your connection

Troubleshoot RDP connectivity issues

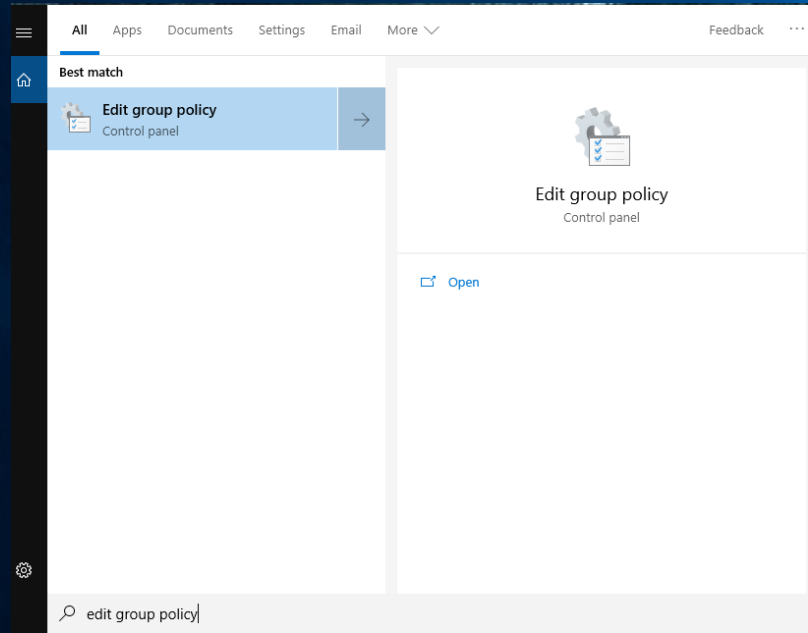


Just click 'Yes' if prompted by this message



Recycle Bin

At this point, you could consider editing your Windows Update Policy to avoid unwanted reboots during simulations



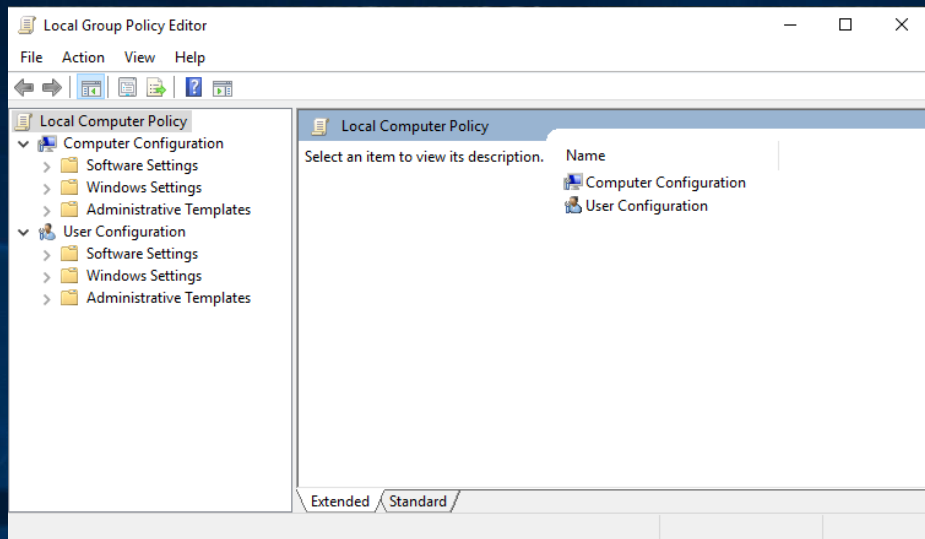
Please note that disabling automatic updates is generally inadvisable, and done at your own risk. DHI assumes no responsibility should you choose to do so.

Ok? Let's continue.
Search for and launch "Edit Group Policy" to get started





Recycle Bin



Navigate to:

Computer Configuration\Administrative Templates\
Windows Components\Windows update\
Configure Automatic Updates





Recycle Bin

Local Group Policy Editor

File Action View Help

Windows Update

Configure Automatic Updates

Edit [policy setting](#)

Requirements:
Windows XP Professional Service Pack 1 or At least Windows 2000 Service Pack 3

Description:
Specifies whether this computer will receive security updates and other important downloads through the Windows automatic updating service.

Note: This policy does not apply to Windows RT.

Extended Standard

34 setting(s)

Configure Automatic Updates

Previous Setting Next Setting

Not Configured Comment:

 Enabled

 Disabled

Supported on: Windows XP Professional Service Pack 1 or At least Windows 2000 Service Pack 3

Options:

Configure automatic updating:

The following settings are only required and applicable if 4 is selected.

Install during automatic maintenance

Scheduled install day:

Scheduled install time:

If you have selected "4 - Auto download and schedule the install" for your scheduled install day and specified a schedule, you also have the option to limit updating to a weekly, bi-weekly or monthly occurrence, using the options below:

Help:

Specifies whether this computer will receive security updates and other important downloads through the Windows automatic updating service.

Note: This policy does not apply to Windows RT.

This setting lets you specify whether automatic updates are enabled on this computer. If the service is enabled, you must select one of the four options in the Group Policy Setting:

2 = Notify before downloading and installing any updates.

When Windows finds updates that apply to this computer, users will be notified that updates are ready to be downloaded. After going to Windows Update, users can download and install any available updates.

3 = (Default setting) Download the updates automatically and notify when they are ready to be installed

Windows finds updates that apply to the computer and

OK Cancel Apply

Set to Disabled
Click OK
Close Local Group Policy Editor
to continue



Recycle Bin

Once connected to your VM, you can go straight to DHI License Management via Windows Search – Let's do that!

If you have chosen the Pay As You Go – variant, this step can be ignored, as your license is already configured.





Recycle Bin

Best match

 **DHI License Management**
Desktop app

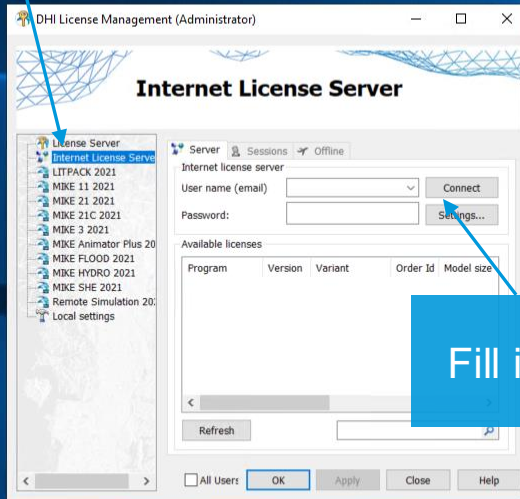
Settings, File Explorer, Mail, Photos, Music

DHI License

Find DHI License Management,
and have your MIKE Internet
license information ready at hand!

Windows taskbar with icons for Start, Search, Task View, Edge, File Explorer, and a running application.

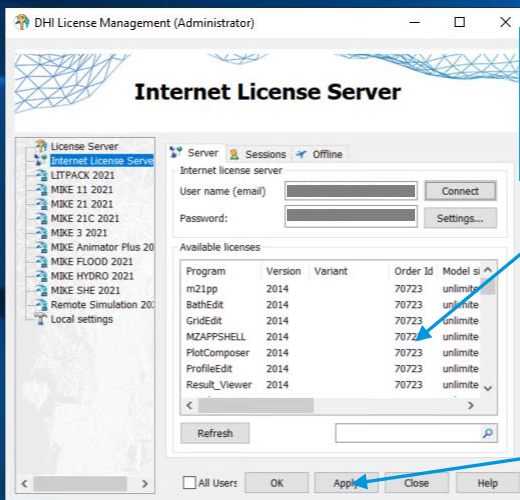
Now go to Internet License Server



Fill in your details and click 'Connect'

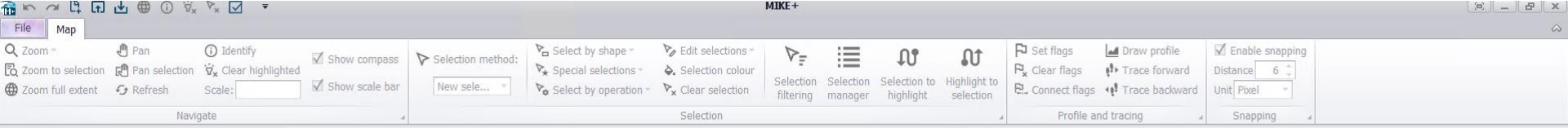


Recycle Bin



Your license information should soon appear here

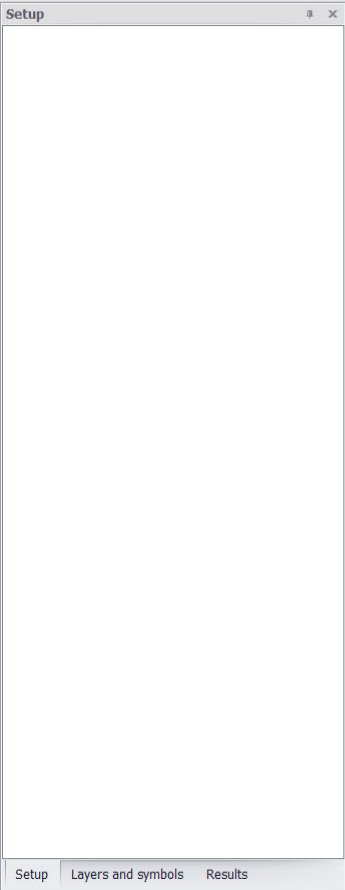
Remember to click 'Apply' before you exit the License Manager

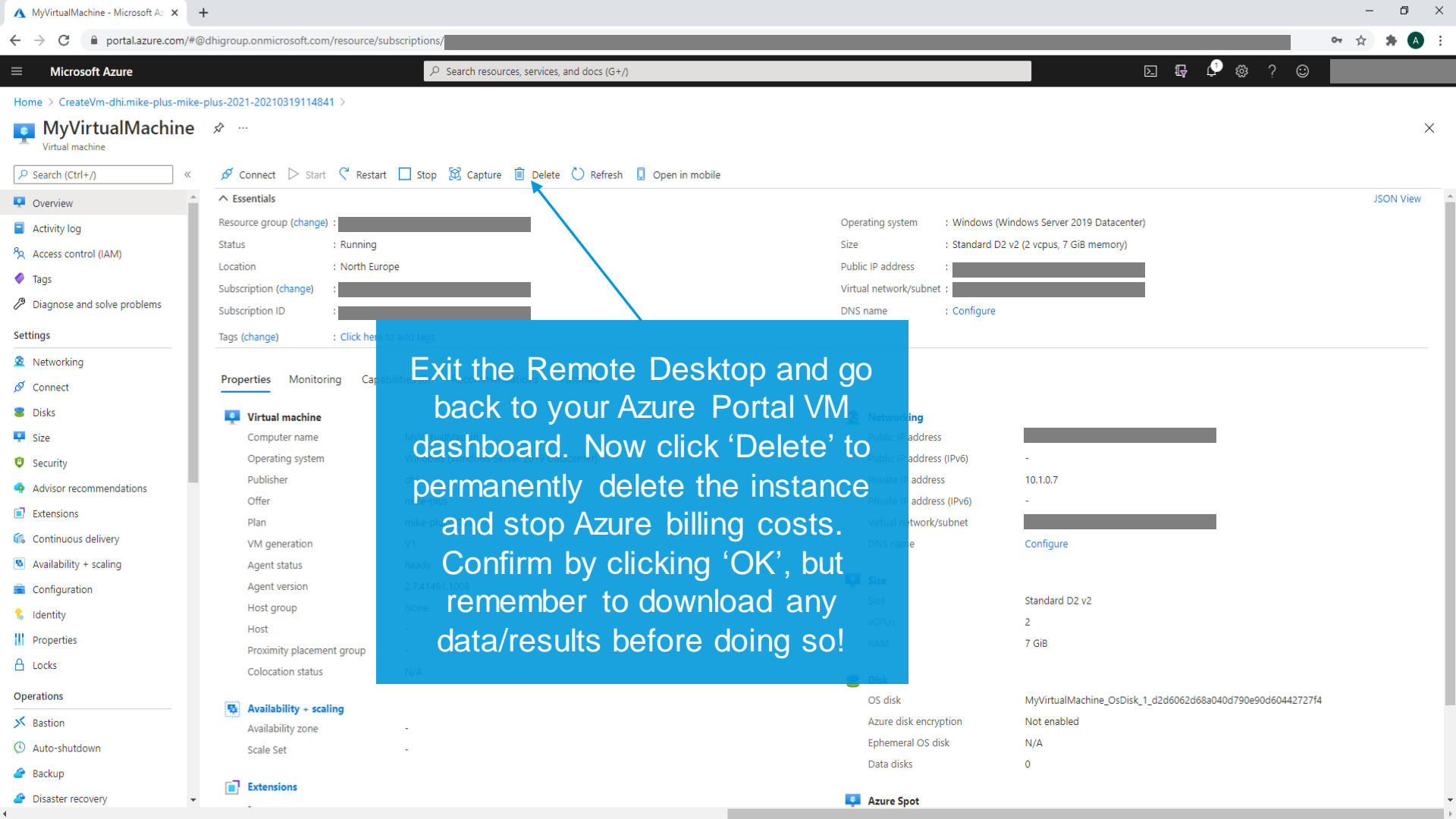


Now you can open MIKE+ and
you're ready to model!

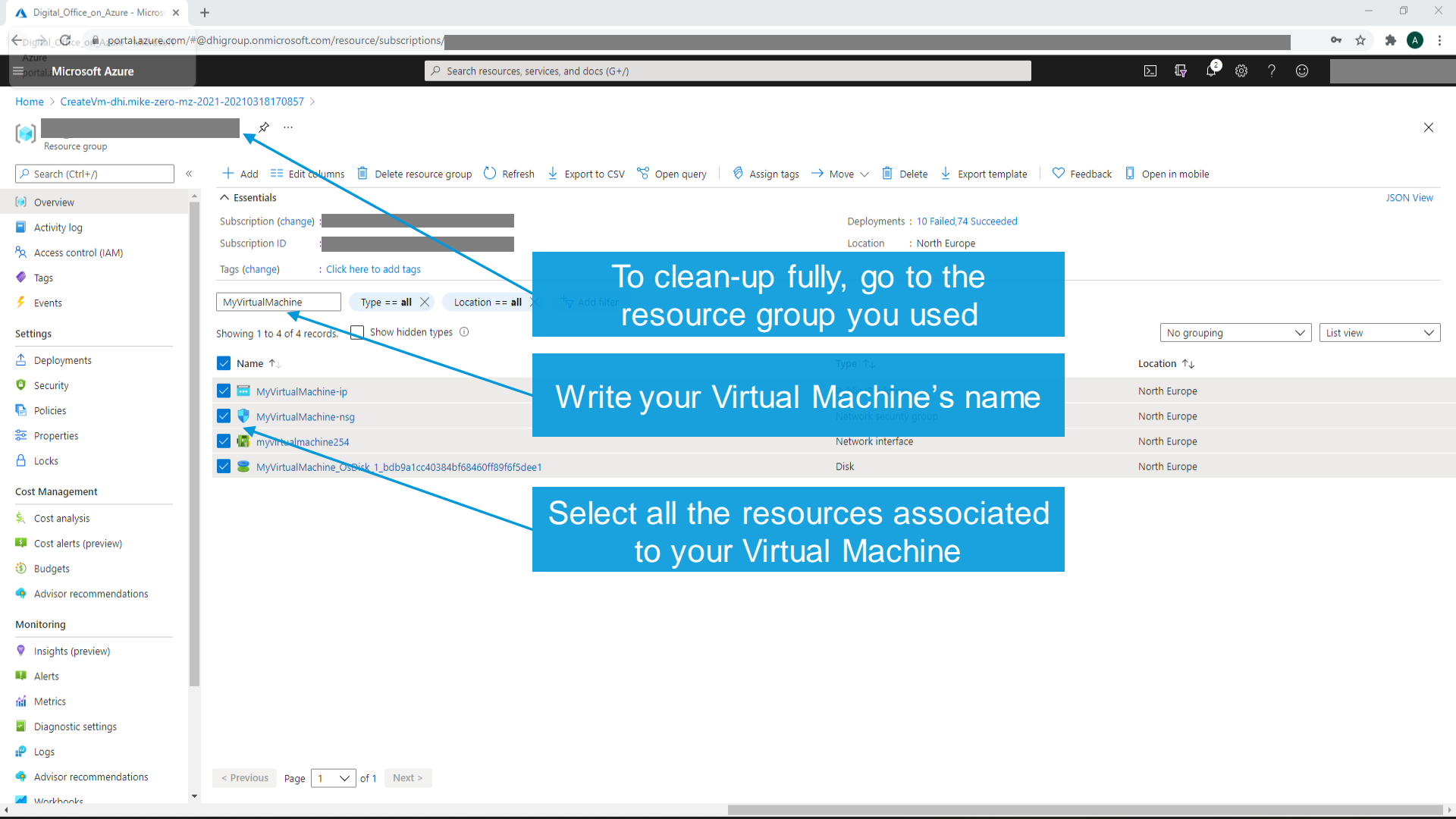
But what do you do when you're
done with the VM?

Let's quickly go through the
steps!





Exit the Remote Desktop and go back to your Azure Portal VM dashboard. Now click 'Delete' to permanently delete the instance and stop Azure billing costs. Confirm by clicking 'OK', but remember to download any data/results before doing so!

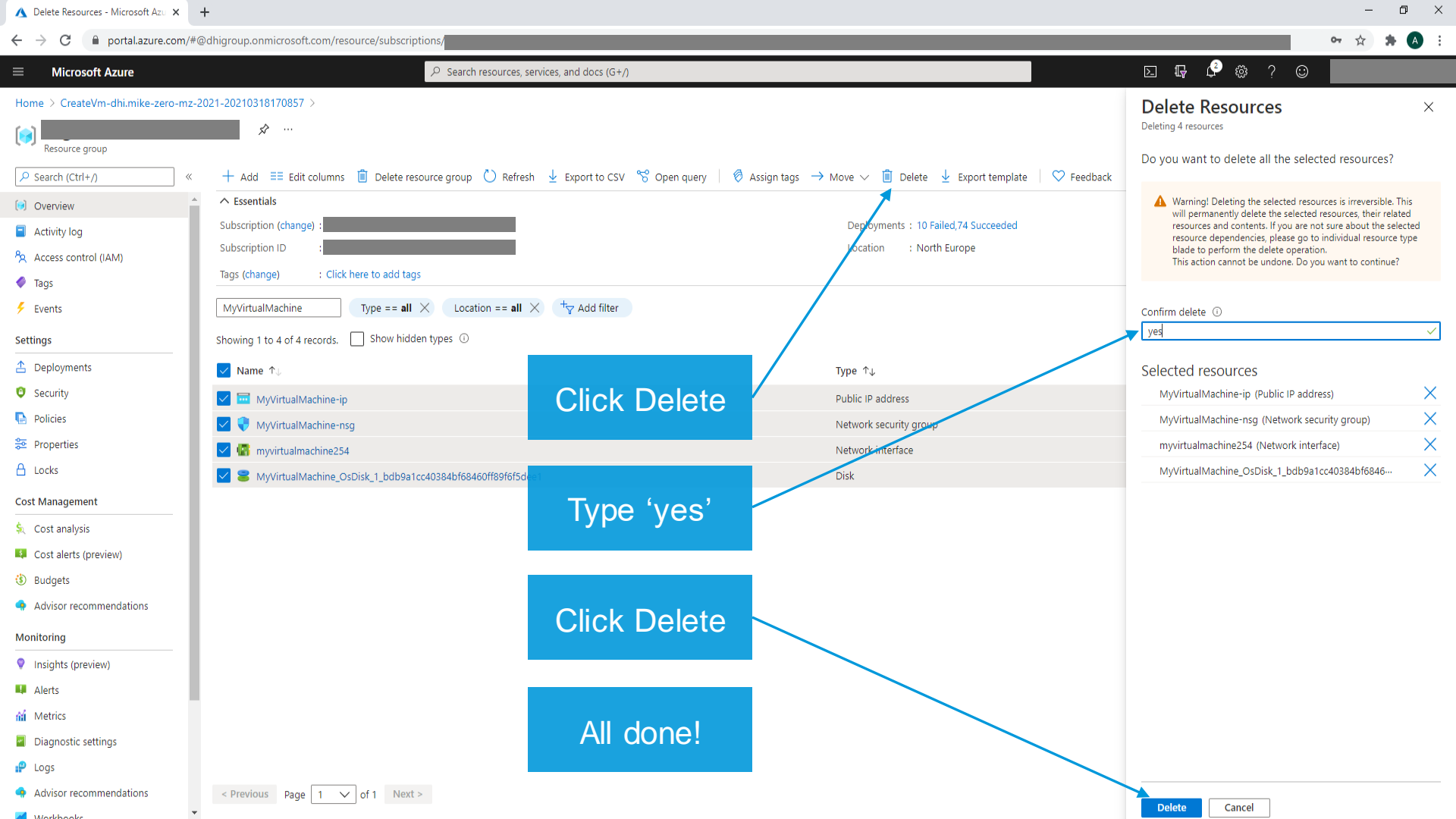


To clean-up fully, go to the resource group you used

Write your Virtual Machine's name

Select all the resources associated to your Virtual Machine

Name	Type	Location
<input checked="" type="checkbox"/> MyVirtualMachine-ip	IP address	North Europe
<input checked="" type="checkbox"/> MyVirtualMachine-nsg	Network security group	North Europe
<input checked="" type="checkbox"/> myvirtualmachine254	Network interface	North Europe
<input checked="" type="checkbox"/> MyVirtualMachine_OsDisk_1_bdb9a1cc40384bf68460ff89f6f5dee1	Disk	North Europe



Resource group

Search (Ctrl+)

- Overview
- Activity log
- Access control (IAM)
- Tags
- Events
- Settings

- Deployments
- Security
- Policies
- Properties
- Locks
- Cost Management

- Cost analysis
- Cost alerts (preview)
- Budgets
- Advisor recommendations

- Monitoring
- Insights (preview)
- Alerts
- Metrics
- Diagnostic settings
- Logs
- Advisor recommendations
- Workbooks

+ Add | Edit columns | Delete resource group | Refresh | Export to CSV | Open query | Assign tags | Move | Delete | Export template | Feedback

Essentials
Subscription (change) : [redacted] | Deployments : 10 Failed,74 Succeeded
Subscription ID : [redacted] | Location : North Europe
Tags (change) : Click here to add tags

MyVirtualMachine | Type == all | Location == all | Add filter

Showing 1 to 4 of 4 records. Show hidden types

Name	Type
MyVirtualMachine-ip	Public IP address
MyVirtualMachine-nsg	Network security group
myvirtualmachine254	Network interface
MyVirtualMachine_OsDisk_1_bdb9a1cc40384bf68460ff89f65d...	Disk

Click Delete

Type 'yes'

Click Delete

All done!

Delete Resources

Deleting 4 resources

Do you want to delete all the selected resources?

Warning! Deleting the selected resources is irreversible. This will permanently delete the selected resources, their related resources and contents. If you are not sure about the selected resource dependencies, please go to individual resource type blade to perform the delete operation. This action cannot be undone. Do you want to continue?

Confirm delete
yes

- Selected resources
- MyVirtualMachine-ip (Public IP address)
 - MyVirtualMachine-nsg (Network security group)
 - myvirtualmachine254 (Network interface)
 - MyVirtualMachine_OsDisk_1_bdb9a1cc40384bf6846...

Delete | Cancel

Thank you!