

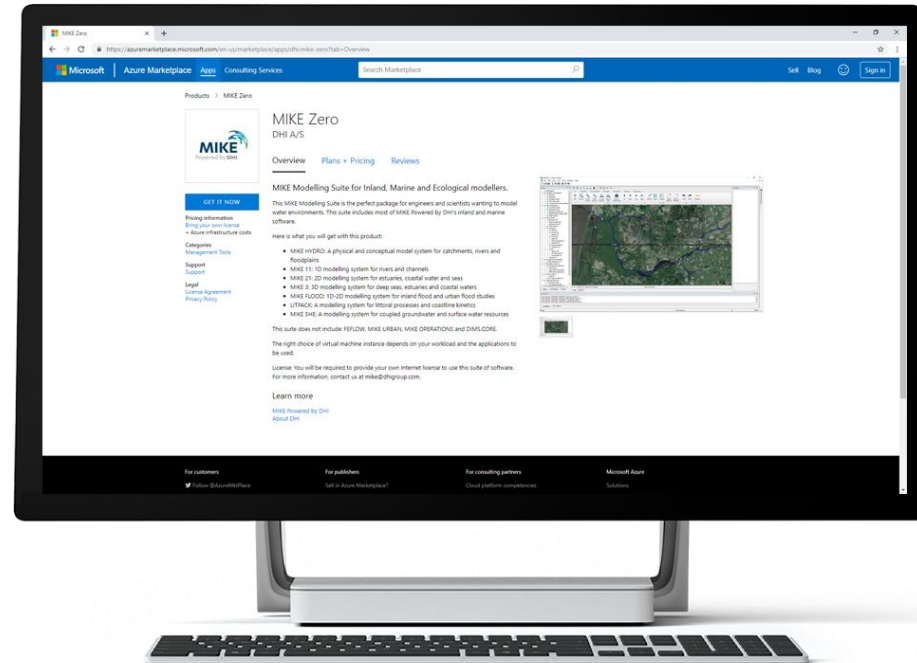
Step-by-step Guide

How to start a MIKE Zero Virtual Machine from Microsoft Azure Marketplace

MIKE Zero is now available on Azure Marketplace

What's required?

- Microsoft Azure account
- DHI internet license for MIKE Zero
If you choose "Bring your own license"





Browse apps

Get Started

Analytics

AI + Machine Learning

Azure Active Directory

Blockchain

Compute

Containers

Databases

Developer Tools

DevOps

Identity

Integration

Internet of Things

IT & Management Tools

Monitoring & Diagnostics

Media

Migration

Mixed Reality

Networking

Security

Storage

Web

Trials


Operating System

Publisher

Pricing Model


Product Type


All results



MIKE Zero
By DHI A/S
MIKE Modelling Suite for Water Environment.


Bring your own license

[Get it now](#) 



MIKE Zero
By DHI A/S
MIKE Modelling Suite for Water Environment.

Starts at
\$12.00/hour

[Get it now](#) 

Find MIKE Zero via the Marketplace Search Tool

Click 'Get it Now' on the license type you want.

Browse apps

Get Started

- Analytics
- AI + Machine Learning
- Azure Active Directory
- Blockchain
- Compute
- Containers
- Databases
- Developer Tools
- DevOps
- Identity
- Integration
- Internet of Things
- IT & Management Tools
- Monitoring & Diagnostics
- Media
- Migration
- Mixed Reality
- Networking
- Security
- Storage
- Web

Trial: All | Operating System: All | Publisher: All | Pricing Model: All | Product Type: All | Reset filters

Results in All apps for mike zero (1)

MIKE Zero
By DHI A/S
MIKE Modelling Environment.

Sign in to Microsoft Azure Marketplace

Enter the email address of the account you want to use when acquiring apps on Azure Marketplace.

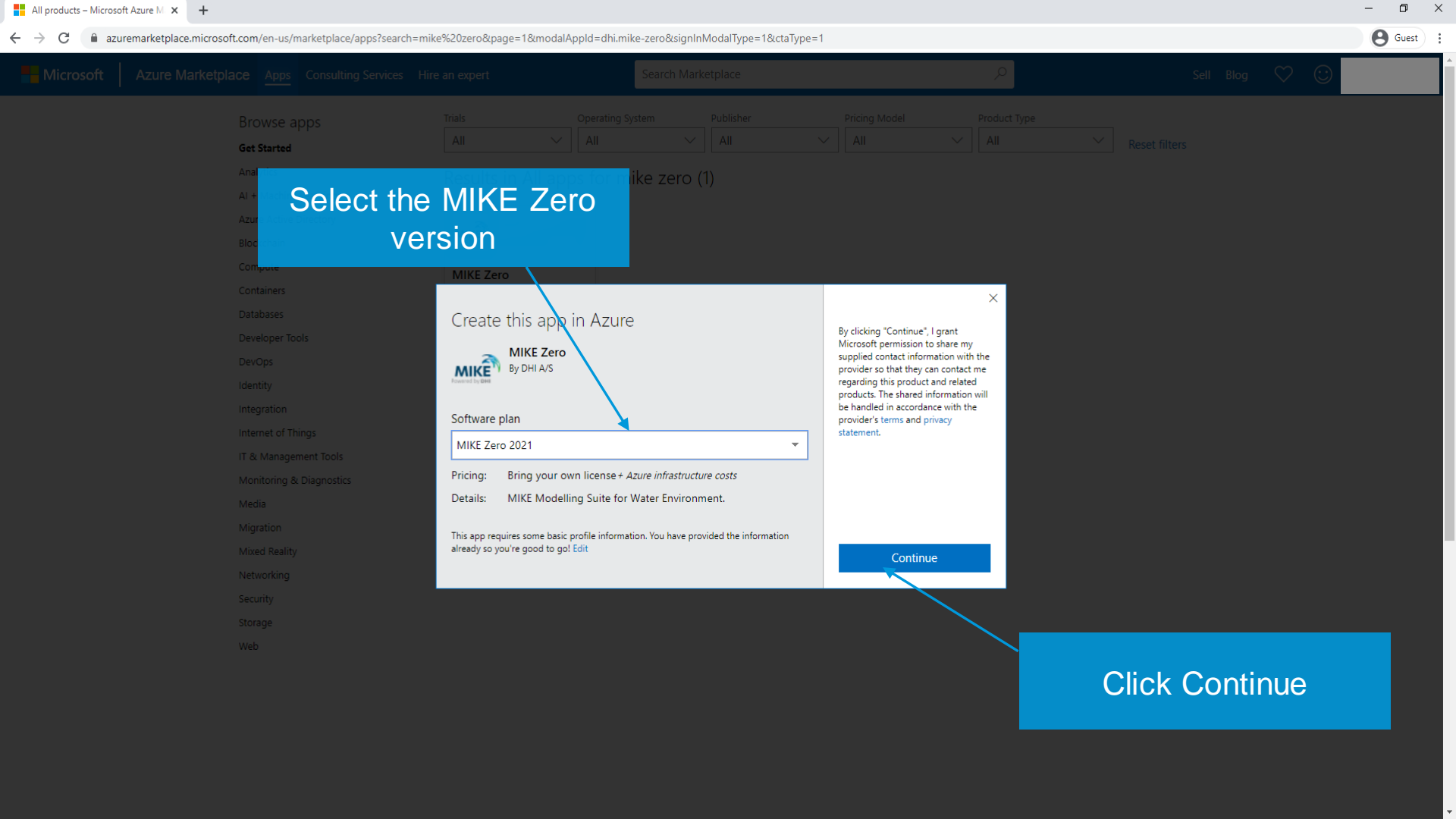
1 If possible, use your work or school account. If you log in with a Microsoft account, apps that require a work or school account will not be available.

Work, school or Microsoft account

Sign in

Don't have an account? [Sign up for a free account](#)

Login to your Microsoft Azure account if not already signed in.



Select the MIKE Zero version

Create this app in Azure



Software plan

MIKE Zero 2021

Pricing: Bring your own license + Azure infrastructure costs

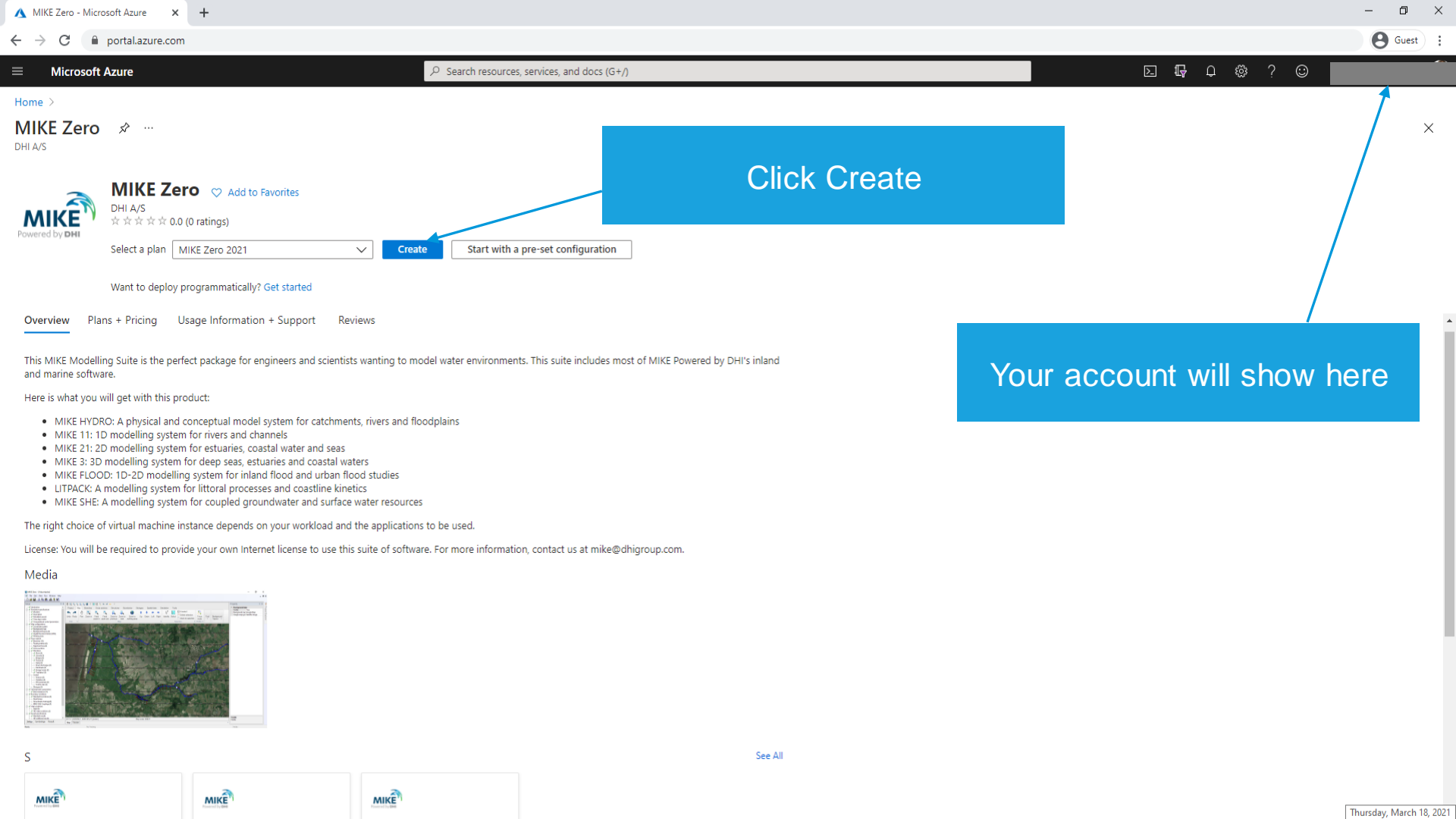
Details: MIKE Modelling Suite for Water Environment.

This app requires some basic profile information. You have provided the information already so you're good to go! [Edit](#)

By clicking "Continue", I grant Microsoft permission to share my supplied contact information with the provider so that they can contact me regarding this product and related products. The shared information will be handled in accordance with the provider's [terms](#) and [privacy statement](#).

Continue

Click Continue



Home >

MIKE Zero

DHI A/S



MIKE Zero [Add to Favorites](#)

DHI A/S
☆☆☆☆ 0.0 (0 ratings)

Select a plan MIKE Zero 2021

Create

Start with a pre-set configuration

Want to deploy programmatically? [Get started](#)

Overview Plans + Pricing Usage Information + Support Reviews

This MIKE Modelling Suite is the perfect package for engineers and scientists wanting to model water environments. This suite includes most of MIKE Powered by DHI's inland and marine software.

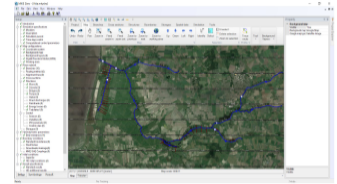
Here is what you will get with this product:

- MIKE HYDRO: A physical and conceptual model system for catchments, rivers and floodplains
- MIKE 11: 1D modelling system for rivers and channels
- MIKE 21: 2D modelling system for estuaries, coastal water and seas
- MIKE 3: 3D modelling system for deep seas, estuaries and coastal waters
- MIKE FLOOD: 1D-2D modelling system for inland flood and urban flood studies
- LITPACK: A modelling system for littoral processes and coastline kinetics
- MIKE SHE: A modelling system for coupled groundwater and surface water resources

The right choice of virtual machine instance depends on your workload and the applications to be used.

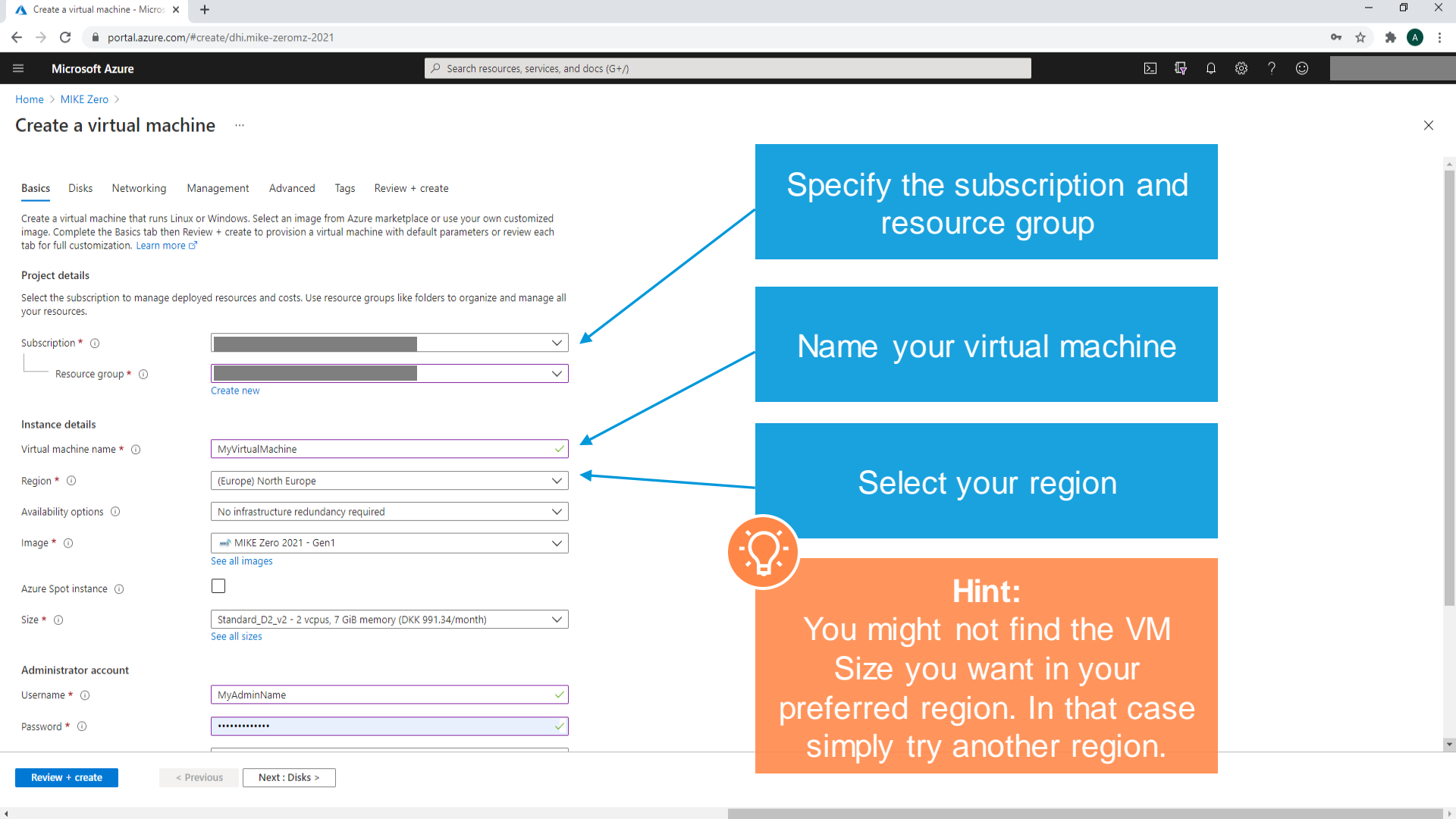
License: You will be required to provide your own Internet license to use this suite of software. For more information, contact us at mike@dhigroup.com.

Media



[See All](#)





Create a virtual machine

- Basics
- Disks
- Networking
- Management
- Advanced
- Tags
- Review + create

Create a virtual machine that runs Linux or Windows. Select an image from Azure marketplace or use your own customized image. Complete the Basics tab then Review + create to provision a virtual machine with default parameters or review each tab for full customization. [Learn more](#)

Project details

Select the subscription to manage deployed resources and costs. Use resource groups like folders to organize and manage all your resources.

Subscription *

Resource group * [Create new](#)

Instance details

Virtual machine name *

Region *

Availability options

Image * [See all images](#)

Azure Spot instance

Size * [See all sizes](#)

Administrator account

Username *

Password *

Specify the subscription and resource group

Name your virtual machine

Select your region



Hint:
You might not find the VM Size you want in your preferred region. In that case simply try another region.

Create a virtual machine

Instance details

Virtual machine name *

Region *

Availability options

Availability zone *

You can now select multiple zones. Selecting multiple zones will create one VM per zone. [Learn more](#)

Security type

[Configure security features](#)

Image *

[See all images](#) | [Configure VM generation](#)

This image is not compatible with the selected security type. To keep Trusted launch virtual machines, select a compatible image. Otherwise, change your security type back to Standard.

VM architecture Arm64
 x64

Arm64 is not supported with the selected image.

Run with Azure Spot discount

Size *

[See all sizes](#)

Administrator account

Username *

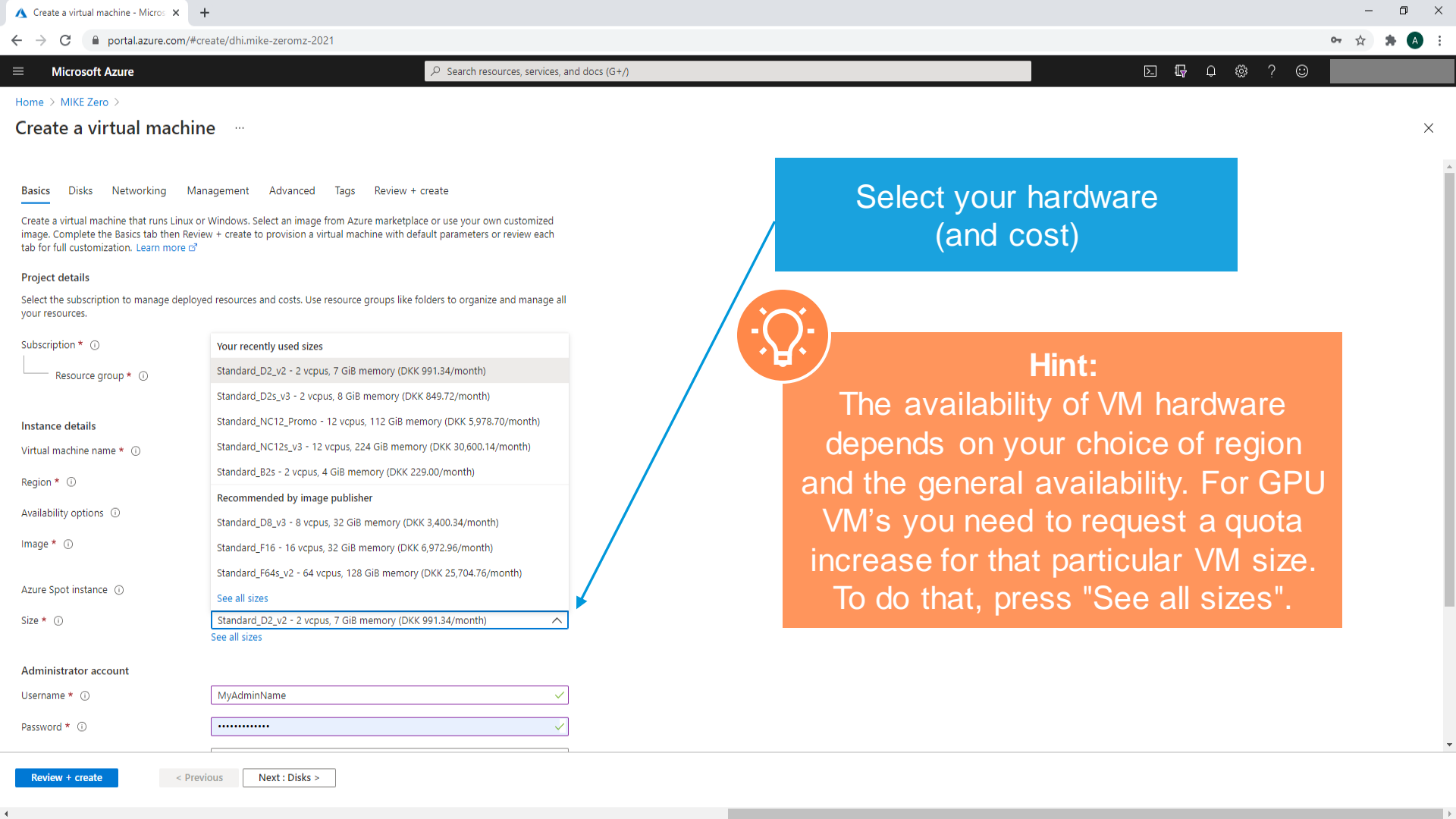


Hint:
If you encounter this message simply select 'Standard' Security type.

[Review + create](#)

[< Previous](#)

[Next : Disks >](#)



Select your hardware
(and cost)



Hint:
The availability of VM hardware depends on your choice of region and the general availability. For GPU VM's you need to request a quota increase for that particular VM size. To do that, press "See all sizes".

Your recently used sizes

- Standard_D2_v2 - 2 vcpus, 7 GiB memory (DKK 991.34/month)
- Standard_D2s_v3 - 2 vcpus, 8 GiB memory (DKK 849.72/month)
- Standard_NC12_Promo - 12 vcpus, 112 GiB memory (DKK 5,978.70/month)
- Standard_NC12s_v3 - 12 vcpus, 224 GiB memory (DKK 30,600.14/month)
- Standard_B2s - 2 vcpus, 4 GiB memory (DKK 229.00/month)

Recommended by image publisher

- Standard_D8_v3 - 8 vcpus, 32 GiB memory (DKK 3,400.34/month)
- Standard_F16 - 16 vcpus, 32 GiB memory (DKK 6,972.96/month)
- Standard_F64s_v2 - 64 vcpus, 128 GiB memory (DKK 25,704.76/month)

[See all sizes](#)

Standard_D2_v2 - 2 vcpus, 7 GiB memory (DKK 991.34/month) ^

[See all sizes](#)

Review + create

< Previous

Next: Disks >

Select a VM size

Search by VM size...

Display cost: **Monthly** vCPUs: **All** RAM (GiB): **All** Type: **GPU** Add filter

Showing 41 of 678 VM sizes. | Subscription: DHI-MDD-OPERATIONS | Region: UK South | Current size: Standard_D8s_v5 | Image: FF

VM Size ↑↓	Type ↑↓	vCPUs ↑↓	RAM (GiB) ↑↓	Data disks
Other sizes				
Size not available See the info bubble next to a size for details on availability				
Insufficient quota - family limit Family vCPUs are insufficient to deploy these sizes				
NV4as_v4 Request quota	GPU	4	14	8
NV6ads_A10_v5 Request quota	GPU	6	55	4
NV8as_v4 Request quota	GPU	8	28	16
NV12ads_A10_v5 Request quota	GPU	12	110	8
NV16as_v4 Request quota	GPU	16	56	32
NV32as_v4 Request quota	GPU	32	112	32
NV36ads_A10_v5 Request quota	GPU	36	440	32
NV36adms_A10_v5 Request quota	GPU	36	880	32
NC64as_T4_v3 Request quota	GPU	64	440	32
NV72ads_A10_v5 Request quota	GPU	72	880	32
NV18ads_A10_v5 Request quota	GPU	18	220	16
Unsupported generation The VM generation selected is not supported for these sizes				
Availability zone restriction Sizes are not supported in zone 1				

If you want a GPU VM you need to request a quota.

Before deciding on which GPU VM you want to request a quota increase for you need to verify that it uses an nvidia GPU. Requesting a quota does not guarantee that you will get it: If it is not available you will need to try in another region.



Hint: Microsoft has online documentaion about what their different VM Sizes have in terms of GPU hardware.

Create a virtual machine ...

- Basics
- Disks
- Networking**
- Management
- Monitoring
- Advanced
- Tags
- Review + create

Define network connectivity for your virtual machine by configuring network interface card (NIC) settings. You can control ports, inbound and outbound connectivity with security group rules, or place behind an existing load balancing solution. [Learn more](#)

Network interface

When creating a virtual machine, a network interface will be created for you.

Virtual network * [Create new](#)

Subnet *

Public IP [Create new](#)

NIC network security group None Basic Advanced

Public inbound ports * None Allow selected ports

Select inbound ports *

⚠ This will allow all IP addresses to access your virtual machine. This is only recommended for testing. Use the Advanced controls in the Networking tab to create rules to limit inbound traffic to known IP addresses.

Delete public IP and NIC when VM is deleted

Enable accelerated networking

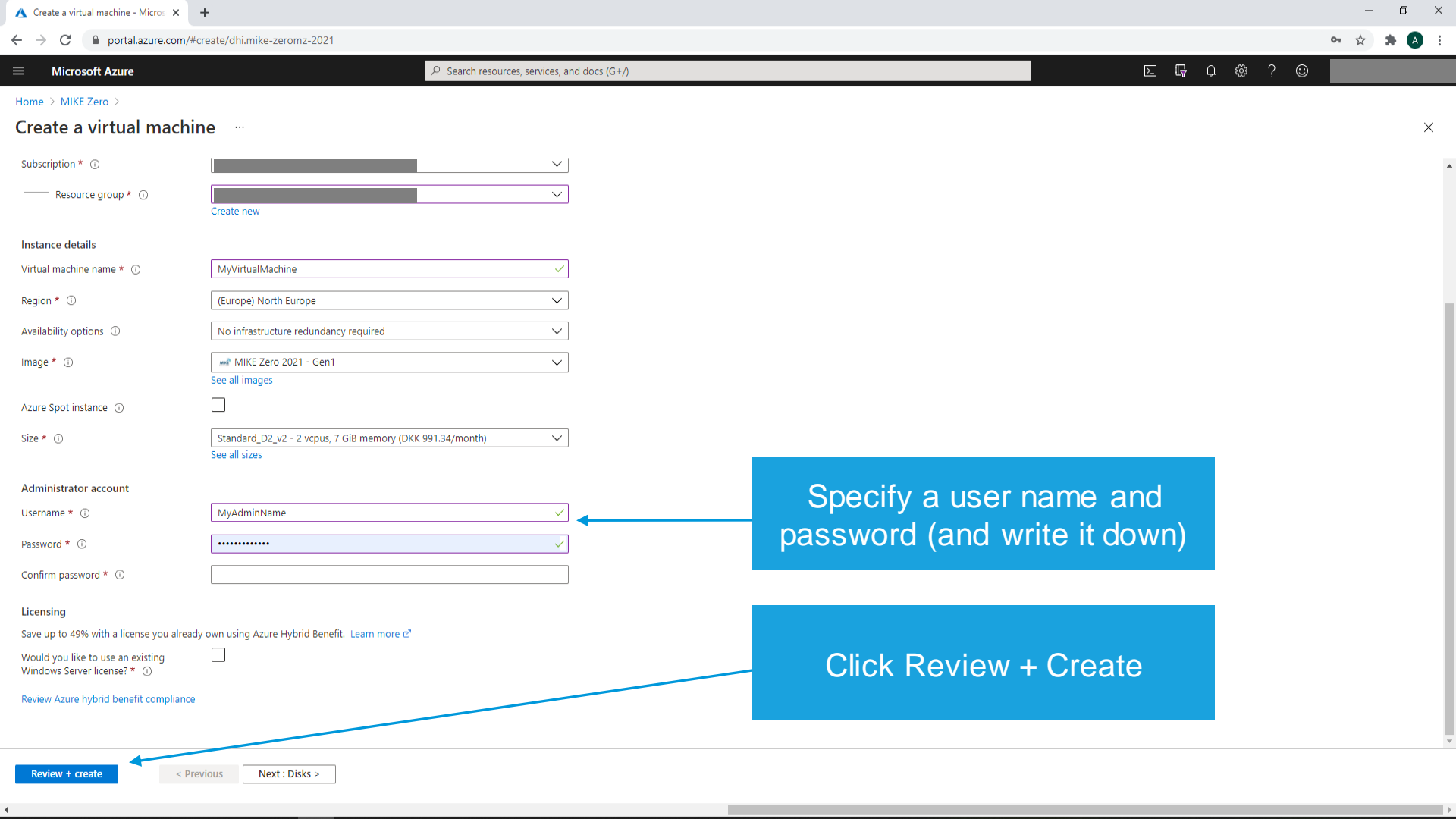
The selected image does not support accelerated networking.

Under 'Networking' make sure the VM has a Public IP so you are able to connect to it after creating

Review + create

< Previous

Next : Management >



Create a virtual machine

Subscription * ⓘ

Resource group * ⓘ

[Create new](#)

Instance details

Virtual machine name * ⓘ

Region * ⓘ

Availability options ⓘ

Image * ⓘ

[See all images](#)

Azure Spot instance ⓘ

Size * ⓘ

[See all sizes](#)

Administrator account

Username * ⓘ

Password * ⓘ

Confirm password * ⓘ

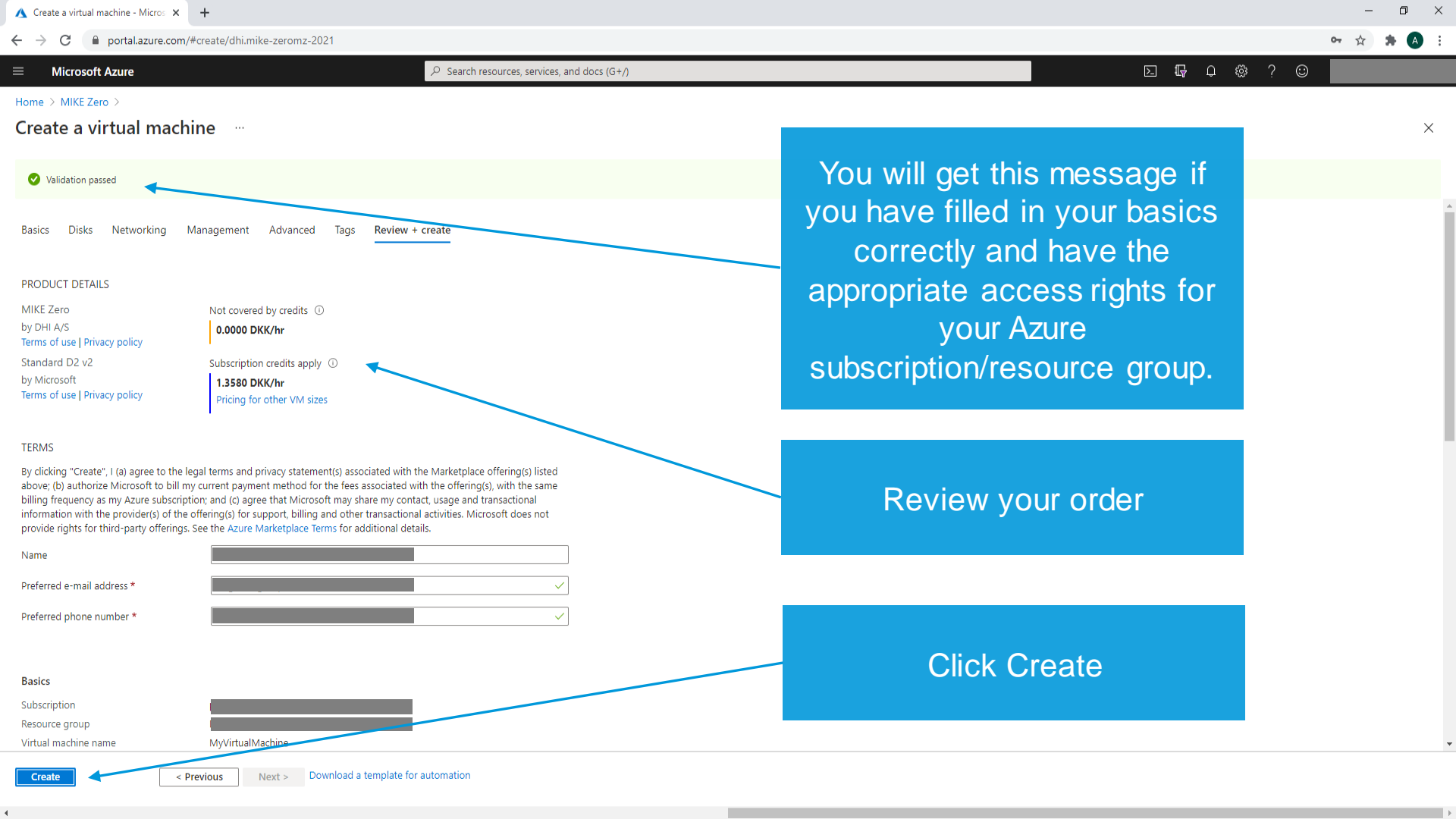
Specify a user name and password (and write it down)

Click Review + Create

Save up to 49% with a license you already own using Azure Hybrid Benefit. [Learn more](#)

Would you like to use an existing Windows Server license? * ⓘ

[Review Azure hybrid benefit compliance](#)



You will get this message if you have filled in your basics correctly and have the appropriate access rights for your Azure subscription/resource group.

Review your order

Click Create

Create a virtual machine

Validation passed

Basics Disks Networking Management Advanced Tags **Review + create**

PRODUCT DETAILS

MIKE Zero
by DHI A/S
Terms of use | Privacy policy

Not covered by credits ⓘ
0.0000 DKK/hr

Subscription credits apply ⓘ
1.3580 DKK/hr
Pricing for other VM sizes

TERMS

By clicking "Create", I (a) agree to the legal terms and privacy statement(s) associated with the Marketplace offering(s) listed above; (b) authorize Microsoft to bill my current payment method for the fees associated with the offering(s), with the same billing frequency as my Azure subscription; and (c) agree that Microsoft may share my contact, usage and transactional information with the provider(s) of the offering(s) for support, billing and other transactional activities. Microsoft does not provide rights for third-party offerings. See the [Azure Marketplace Terms](#) for additional details.

Name

Preferred e-mail address * ✓

Preferred phone number * ✓

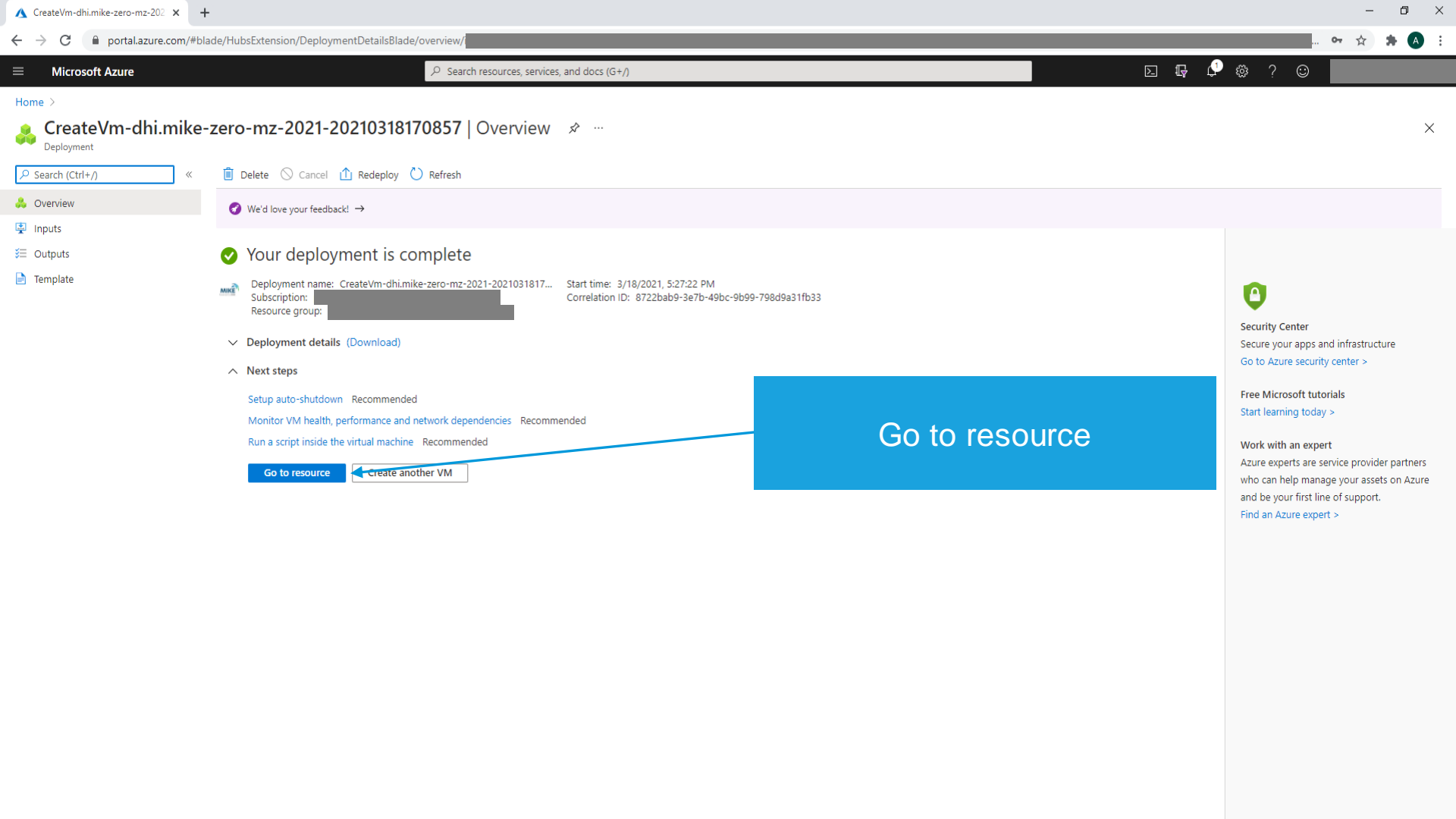
Basics

Subscription

Resource group

Virtual machine name

Create < Previous Next > Download a template for automation



Home >

CreateVm-dhi.mike-zero-mz-2021-20210318170857 | Overview

- Overview
- Inputs
- Outputs
- Template

Delete Cancel Redeploy Refresh

We'd love your feedback! →

Your deployment is complete

Deployment name: CreateVm-dhi.mike-zero-mz-2021-2021031817... Start time: 3/18/2021, 5:27:22 PM
 Subscription: [redacted] Correlation ID: 8722bab9-3e7b-49bc-9b99-798d9a31fb33
 Resource group: [redacted]

Deployment details (Download)

Next steps

- Setup auto-shutdown Recommended
- Monitor VM health, performance and network dependencies Recommended
- Run a script inside the virtual machine Recommended

[Go to resource](#) [Create another VM](#)

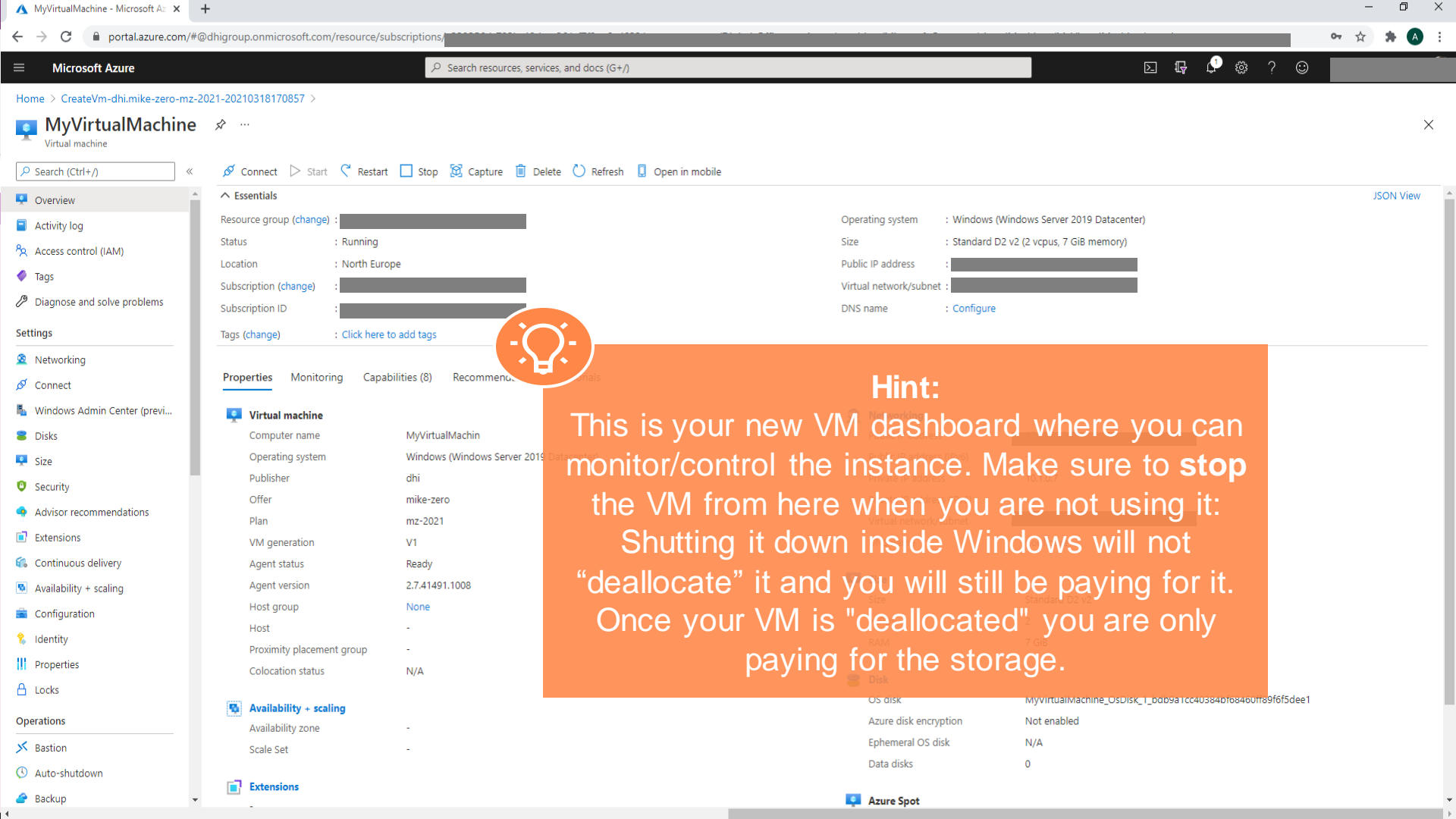
Go to resource



Security Center
 Secure your apps and infrastructure
[Go to Azure security center >](#)

Free Microsoft tutorials
[Start learning today >](#)

Work with an expert
 Azure experts are service provider partners who can help manage your assets on Azure and be your first line of support.
[Find an Azure expert >](#)



MyVirtualMachine

Virtual machine

Search (Ctrl+/)

- Connect
- Start
- Restart
- Stop
- Capture
- Delete
- Refresh
- Open in mobile

- Overview
- Activity log
- Access control (IAM)
- Tags
- Diagnose and solve problems

- Settings
 - Networking
 - Connect
 - Windows Admin Center (previ...
 - Disks
 - Size
 - Security
 - Advisor recommendations
 - Extensions
 - Continuous delivery
 - Availability + scaling
 - Configuration
 - Identity
 - Properties
 - Locks
- Operations
 - Bastion
 - Auto-shutdown
 - Backup

Essentials

Resource group (change) : [redacted]
Status : Running
Location : North Europe
Subscription (change) : [redacted]
Subscription ID : [redacted]
Tags (change) : [Click here to add tags](#)

Operating system : Windows (Windows Server 2019 Datacenter)
Size : Standard D2 v2 (2 vcpus, 7 GiB memory)
Public IP address : [redacted]
Virtual network/subnet : [redacted]
DNS name : [Configure](#)

Properties

Virtual machine

Computer name : MyVirtualMachin
Operating system : Windows (Windows Server 2019 Datacenter)
Publisher : dhi
Offer : mike-zero
Plan : mz-2021
VM generation : V1
Agent status : Ready
Agent version : 2.7.41491.1008
Host group : None
Host : -
Proximity placement group : -
Colocation status : N/A

Availability + scaling

Availability zone : -
Scale Set : -

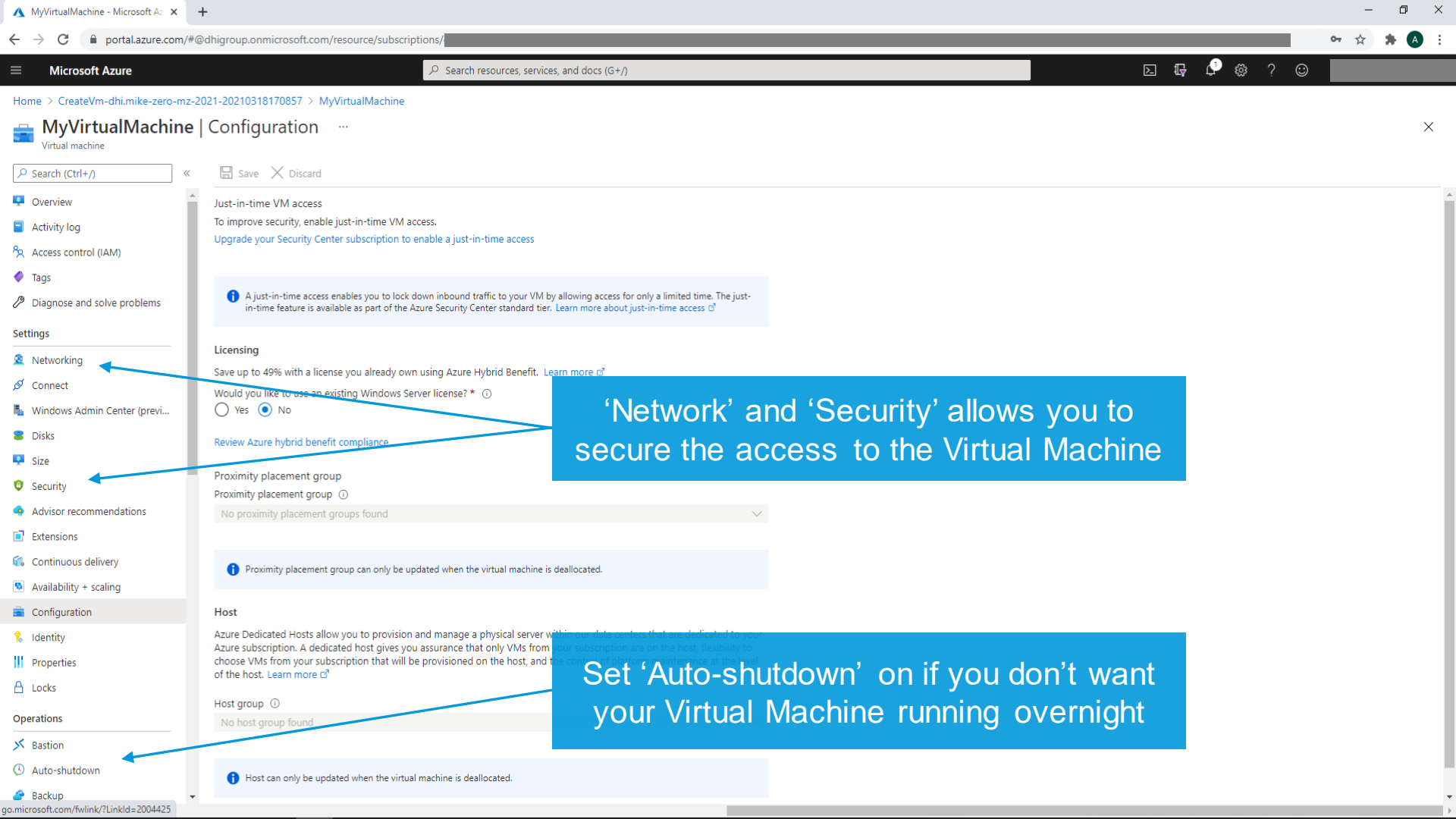
Extensions



Hint:
This is your new VM dashboard where you can monitor/control the instance. Make sure to **stop** the VM from here when you are not using it: Shutting it down inside Windows will not "deallocate" it and you will still be paying for it. Once your VM is "deallocated" you are only paying for the storage.

OS disk : MyVirtualMachine_OSDisk_1_00b9a1cc403e4b768460ff89f6f5dee1
Azure disk encryption : Not enabled
Ephemeral OS disk : N/A
Data disks : 0

Azure Spot



'Network' and 'Security' allows you to secure the access to the Virtual Machine

Set 'Auto-shutdown' on if you don't want your Virtual Machine running overnight

A just-in-time access enables you to lock down inbound traffic to your VM by allowing access for only a limited time. The just-in-time feature is available as part of the Azure Security Center standard tier. [Learn more about just-in-time access](#)

Licensing
Save up to 49% with a license you already own using Azure Hybrid Benefit. [Learn more](#)

Would you like to use an existing Windows Server license? * Yes No

[Review Azure hybrid benefit compliance](#)

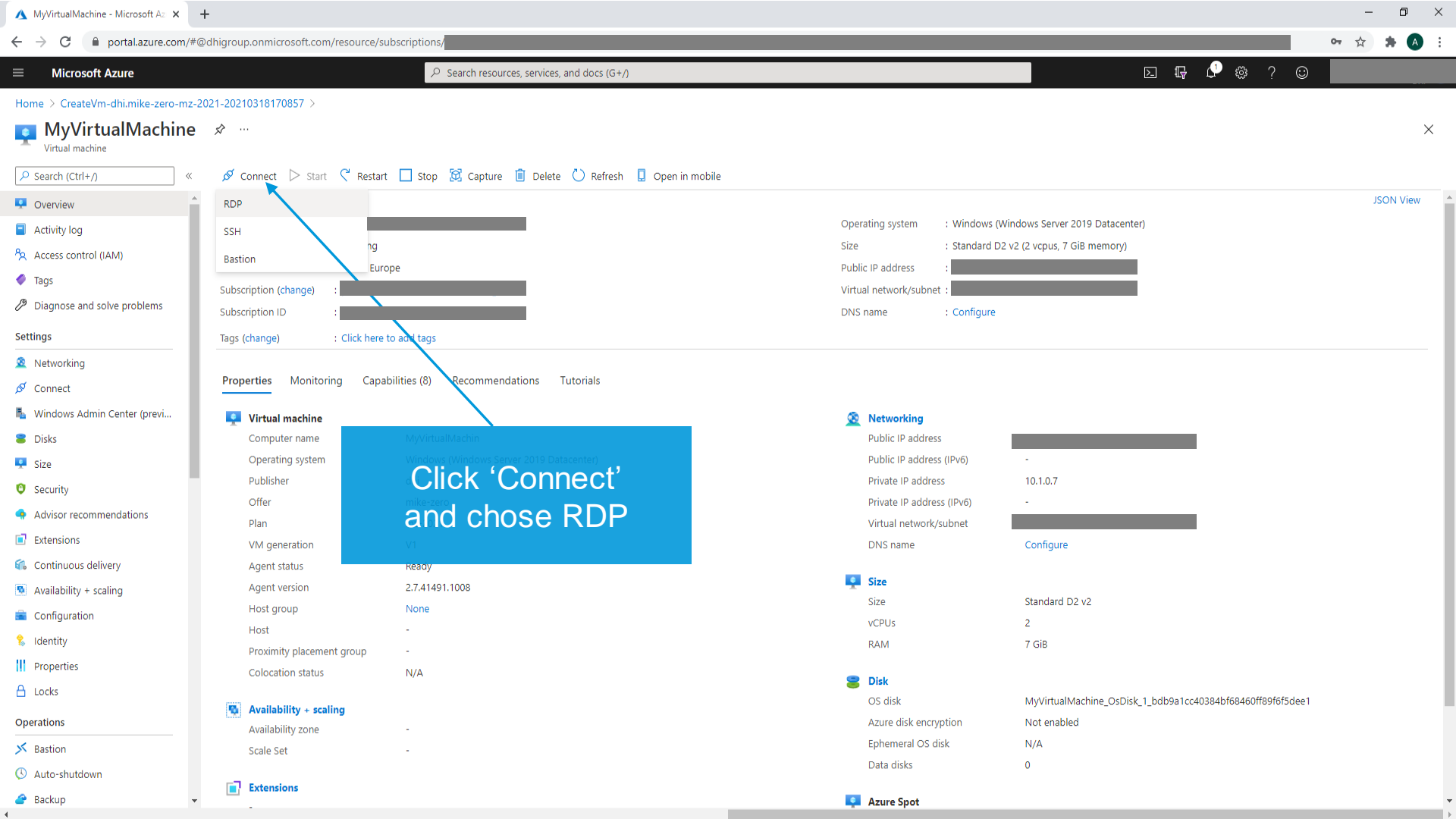
Proximity placement group
Proximity placement group
No proximity placement groups found

Proximity placement group can only be updated when the virtual machine is deallocated.

Host
Azure Dedicated Hosts allow you to provision and manage a physical server with your subscription. A dedicated host gives you assurance that only VMs from your subscription are on the host. [Learn more](#)

Host group
No host group found

Host can only be updated when the virtual machine is deallocated.



MyVirtualMachine

Virtual machine

Search (Ctrl+/) << **Connect** Start Restart Stop Capture Delete Refresh Open in mobile

- Overview
- Activity log
- Access control (IAM)
- Tags
- Diagnose and solve problems
- Settings
 - Networking
 - Connect
 - Windows Admin Center (previ...
 - Disks
 - Size
 - Security
 - Advisor recommendations
 - Extensions
 - Continuous delivery
 - Availability + scaling
 - Configuration
 - Identity
 - Properties
 - Locks
- Operations
 - Bastion
 - Auto-shutdown
 - Backup

RDP

SSH

Bastion

Subscription (change) : [redacted]

Subscription ID : [redacted]

Tags (change) : [Click here to add tags](#)

Properties Monitoring Capabilities (8) Recommendations Tutorials

Virtual machine

Computer name	MyVirtualMachine
Operating system	Windows (Windows Server 2019 Datacenter)
Publisher	microsoft
Offer	mike-zero
Plan	vm
VM generation	v1
Agent status	Ready
Agent version	2.7.41491.1008
Host group	None
Host	-
Proximity placement group	-
Colocation status	N/A

Click 'Connect' and chose RDP

Availability + scaling

Availability zone	-
Scale Set	-

Extensions

Operating system	Windows (Windows Server 2019 Datacenter)
Size	Standard D2 v2 (2 vcpus, 7 GiB memory)
Public IP address	[redacted]
Virtual network/subnet	[redacted]
DNS name	Configure

Networking

Public IP address	[redacted]
Public IP address (IPv6)	-
Private IP address	10.1.0.7
Private IP address (IPv6)	-
Virtual network/subnet	[redacted]
DNS name	Configure

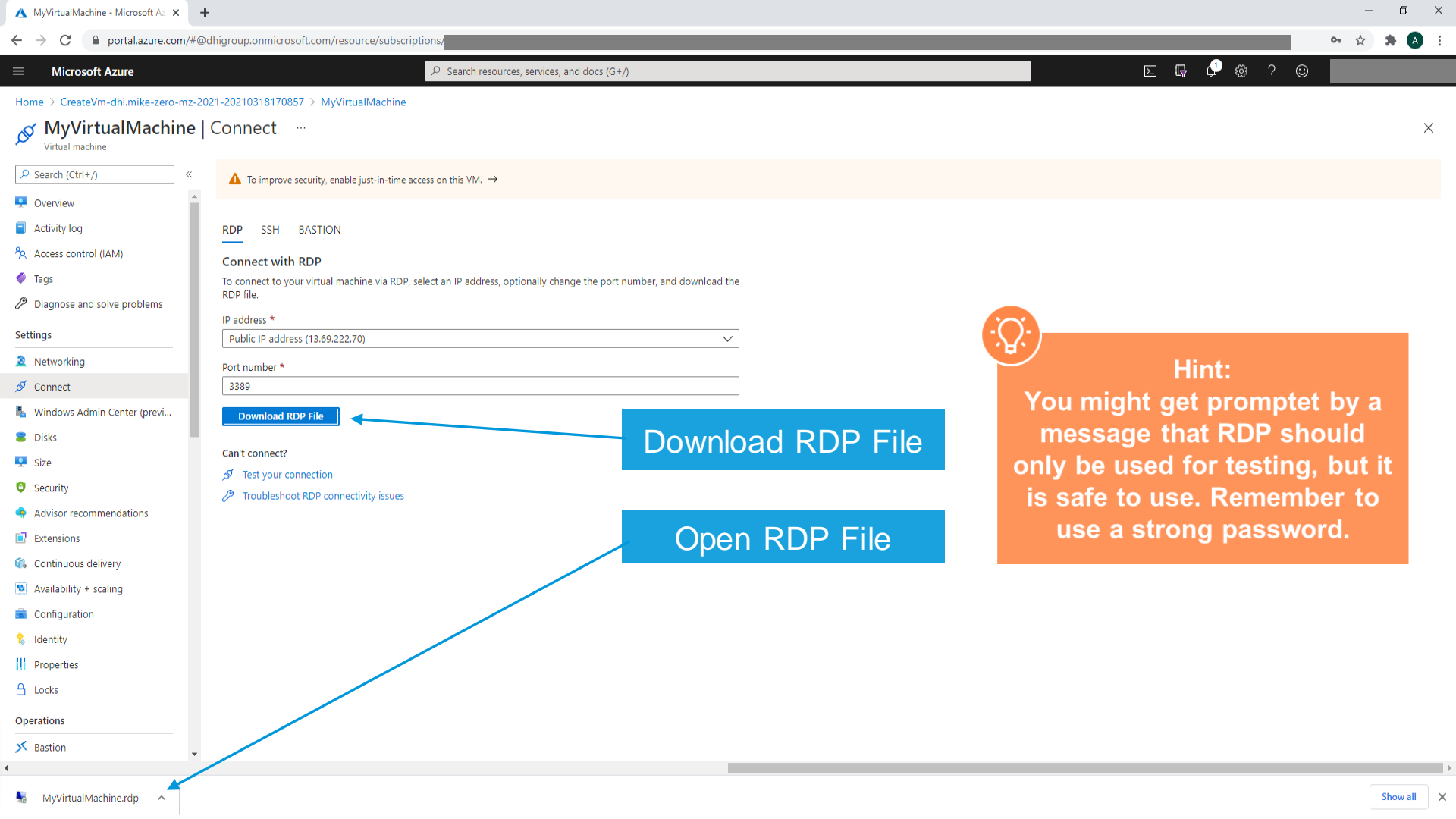
Size

Size	Standard D2 v2
vCPUs	2
RAM	7 GiB

Disk

OS disk	MyVirtualMachine_OsDisk_1_bdb9a1cc40384bf68460ff89f65dee1
Azure disk encryption	Not enabled
Ephemeral OS disk	N/A
Data disks	0

Azure Spot



MyVirtualMachine | Connect

Search (Ctrl+)

- Overview
- Activity log
- Access control (IAM)
- Tags
- Diagnose and solve problems
- Settings
- Networking
- Connect
- Windows Admin Center (previ...
- Disks
- Size
- Security
- Advisor recommendations
- Extensions
- Continuous delivery
- Availability + scaling
- Configuration
- Identity
- Properties
- Locks
- Operations
- Bastion

To improve security, enable just-in-time access on this VM. →

RDP SSH BASTION

Connect with RDP

To connect to your virtual machine via RDP, select an IP address, optionally change the port number, and download the RDP file.

IP address *
Public IP address (13.69.222.70)

Port number *
3389

Download RDP File

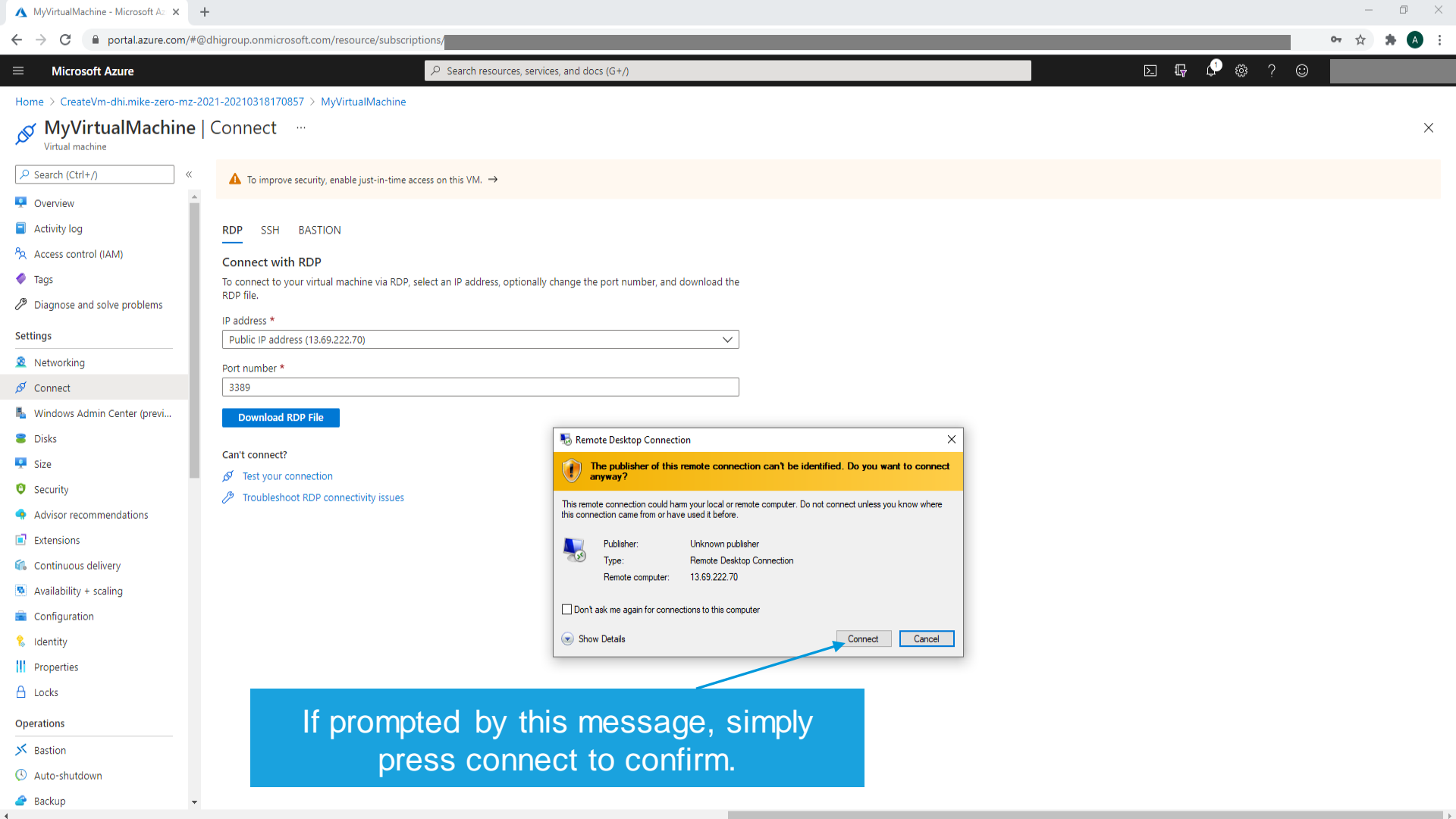
- Can't connect?
- Test your connection
 - Troubleshoot RDP connectivity issues

Download RDP File

Open RDP File



Hint:
You might get prompted by a message that RDP should only be used for testing, but it is safe to use. Remember to use a strong password.



⚠ To improve security, enable just-in-time access on this VM. →

RDP SSH BASTION

Connect with RDP

To connect to your virtual machine via RDP, select an IP address, optionally change the port number, and download the RDP file.

IP address *
Public IP address (13.69.222.70)

Port number *
3389

Download RDP File

Can't connect?

🔗 [Test your connection](#)

🔗 [Troubleshoot RDP connectivity issues](#)

Remote Desktop Connection

The publisher of this remote connection can't be identified. Do you want to connect anyway?

This remote connection could harm your local or remote computer. Do not connect unless you know where this connection came from or have used it before.

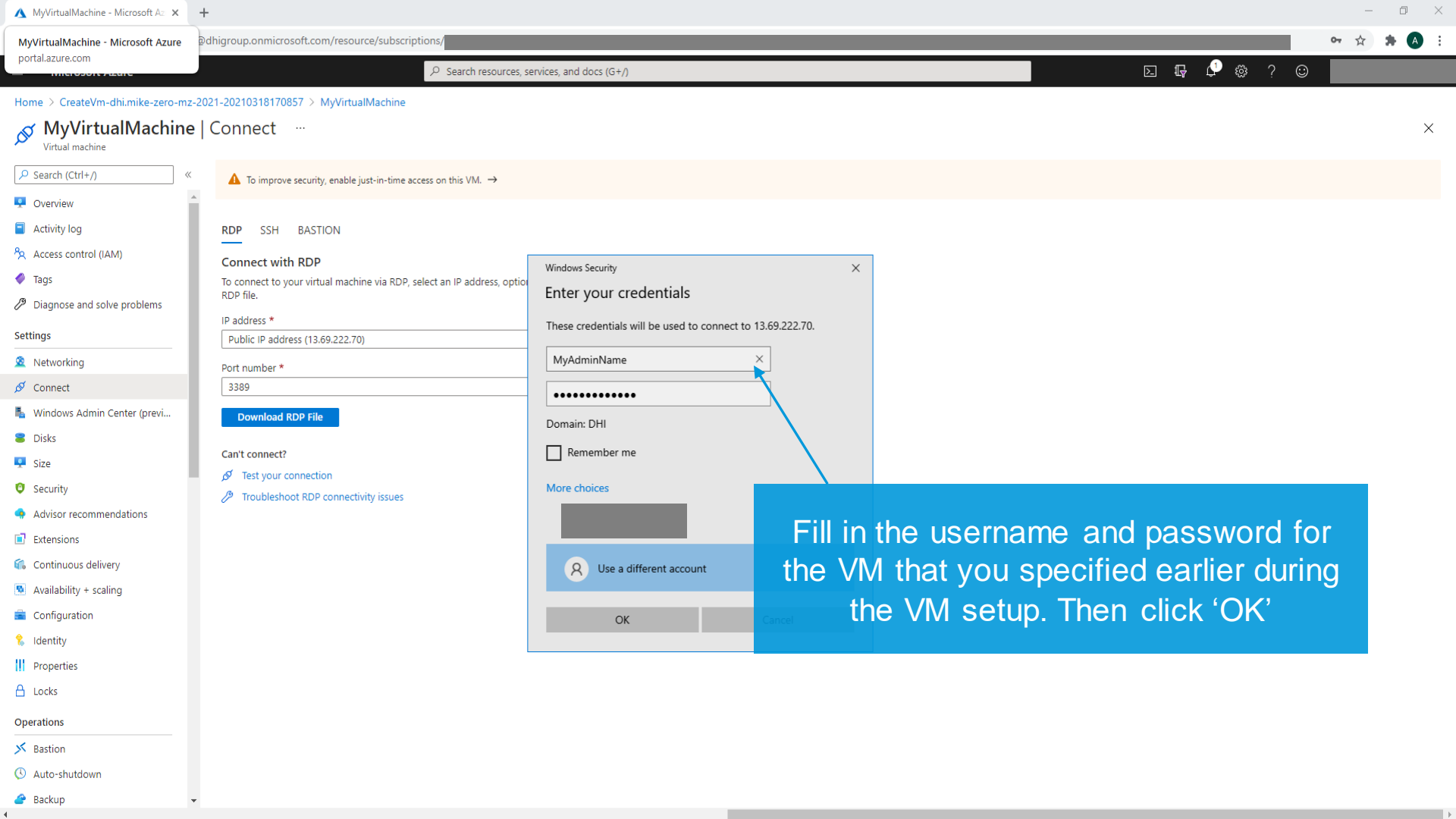
	Publisher:	Unknown publisher
	Type:	Remote Desktop Connection
	Remote computer:	13.69.222.70

Don't ask me again for connections to this computer

Show Details

Connect Cancel

If prompted by this message, simply press connect to confirm.



MyVirtualMachine | Connect

Search (Ctrl+)

- Overview
- Activity log
- Access control (IAM)
- Tags
- Diagnose and solve problems
- Settings
 - Networking
 - Connect
 - Windows Admin Center (previ...
 - Disks
 - Size
 - Security
 - Advisor recommendations
 - Extensions
 - Continuous delivery
 - Availability + scaling
 - Configuration
 - Identity
 - Properties
 - Locks
- Operations
 - Bastion
 - Auto-shutdown
 - Backup

To improve security, enable just-in-time access on this VM. →

RDP SSH BASTION

Connect with RDP

To connect to your virtual machine via RDP, select an IP address, optional RDP file.

IP address *
Public IP address (13.69.222.70)

Port number *
3389

Download RDP File

Can't connect?

- Test your connection
- Troubleshoot RDP connectivity issues

Windows Security

Enter your credentials

These credentials will be used to connect to 13.69.222.70.

MyAdminName

.....

Domain: DHI

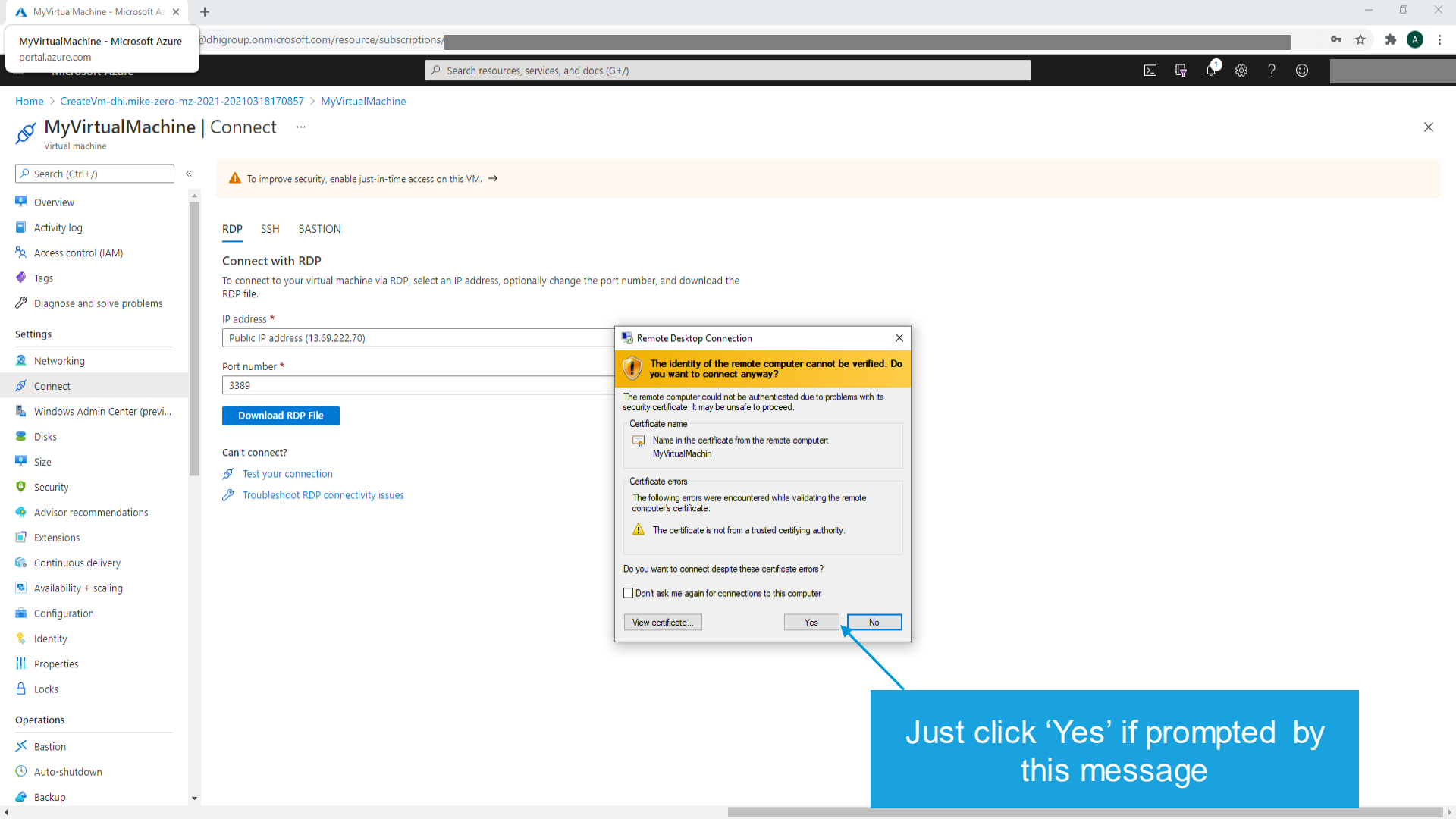
Remember me

More choices

Use a different account

OK Cancel

Fill in the username and password for the VM that you specified earlier during the VM setup. Then click 'OK'



To improve security, enable just-in-time access on this VM. →

RDP SSH BASTION

Connect with RDP

To connect to your virtual machine via RDP, select an IP address, optionally change the port number, and download the RDP file.

IP address *

Public IP address (13.69.222.70)

Port number *

3389

Download RDP File

Can't connect?

Test your connection

Troubleshoot RDP connectivity issues

Remote Desktop Connection

The identity of the remote computer cannot be verified. Do you want to connect anyway?

The remote computer could not be authenticated due to problems with its security certificate. It may be unsafe to proceed.

Certificate name

Name in the certificate from the remote computer:
MyVirtualMachin

Certificate errors

The following errors were encountered while validating the remote computer's certificate:

The certificate is not from a trusted certifying authority.

Do you want to connect despite these certificate errors?

Don't ask me again for connections to this computer

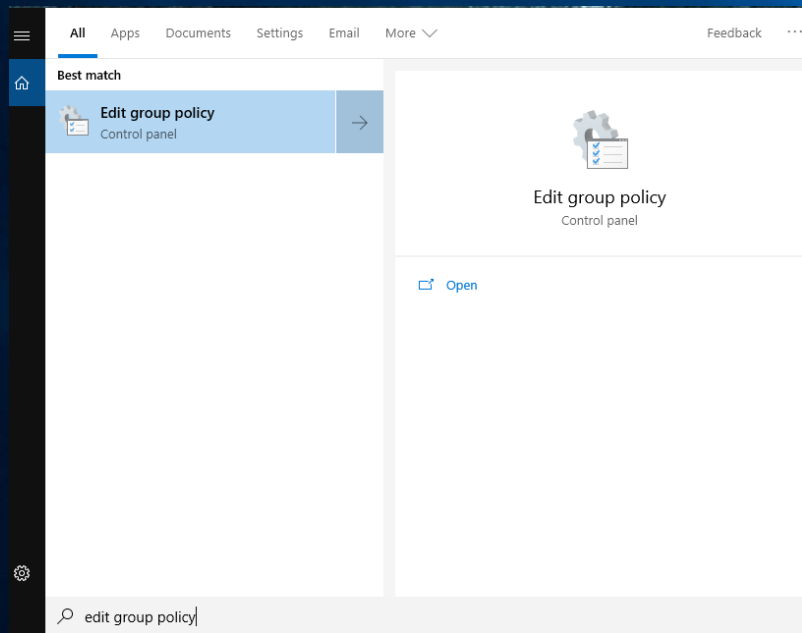
View certificate... Yes No

Just click 'Yes' if prompted by this message



Recycle Bin

At this point, you could consider editing your Windows Update Policy to avoid unwanted reboots during simulations



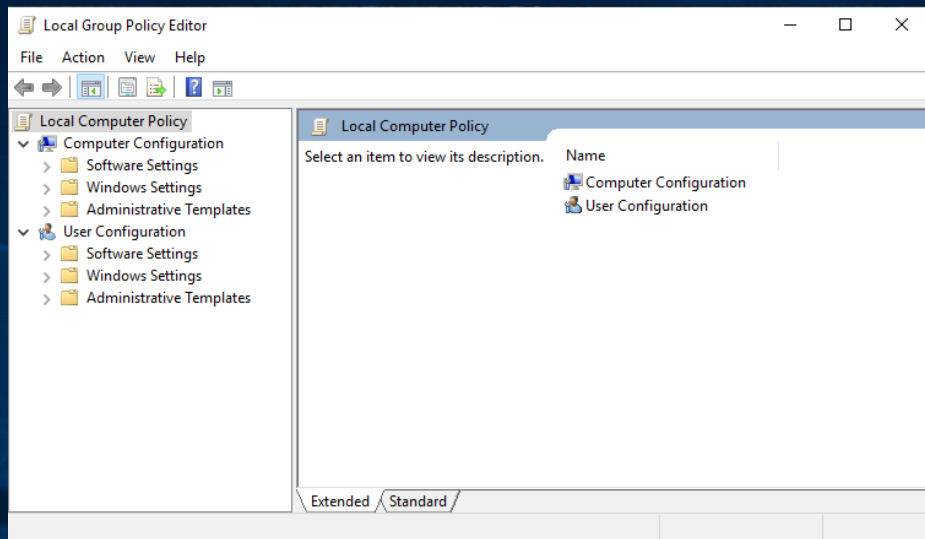
Please note that disabling automatic updates is generally inadvisable, and done at your own risk. DHI assumes no responsibility should you choose to do so.

Ok? Let's continue.
Search for and launch "Edit Group Policy" to get started





Recycle Bin



Navigate to:

Computer Configuration\Administrative Templates\
Windows Components\Windows update\
Configure Automatic Updates





Recycle Bin

Local Group Policy Editor

File Action View Help

Windows Update

Configure Automatic Updates

Edit [policy setting](#)

Requirements:
Windows XP Professional Service Pack 1 or At least Windows 2000 Service Pack 3

Description:
Specifies whether this computer will receive security updates and other important downloads through the Windows automatic updating service.

Note: This policy does not apply to Windows RT.

Extended Standard

34 setting(s)

Configure Automatic Updates

Previous Setting Next Setting

Not Configured Enabled Disabled

Comment:

Supported on:
Windows XP Professional Service Pack 1 or At least Windows 2000 Service Pack 3

Options:

Configure automatic updating:

The following settings are only required and applicable if 4 is selected.

Install during automatic maintenance

Scheduled install day:

Scheduled install time:

If you have selected "4 - Auto download and schedule the install" for your scheduled install day and specified a schedule, you also have the option to limit updating to a weekly, bi-weekly or monthly occurrence, using the options below:

Help:

Specifies whether this computer will receive security updates and other important downloads through the Windows automatic updating service.

Note: This policy does not apply to Windows RT.

This setting lets you specify whether automatic updates are enabled on this computer. If the service is enabled, you must select one of the four options in the Group Policy Setting:

2 = Notify before downloading and installing any updates.

When Windows finds updates that apply to this computer, users will be notified that updates are ready to be downloaded. After going to Windows Update, users can download and install any available updates.

3 = (Default setting) Download the updates automatically and notify when they are ready to be installed

Windows finds updates that apply to the computer and

OK Cancel Apply

Set to Disabled
Click OK
Close Local Group Policy Editor
to continue

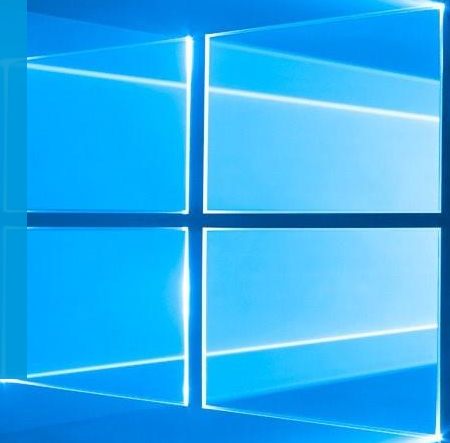




Recycle Bin

Once connected to your VM, you can go straight to DHI License Management via Windows Search – Let's do that!

If you have chosen the Pay As You Go – variant, this step can be ignored, as your license is already configured.





Recycle Bin

Best match

 **DHI License Management**
Desktop app

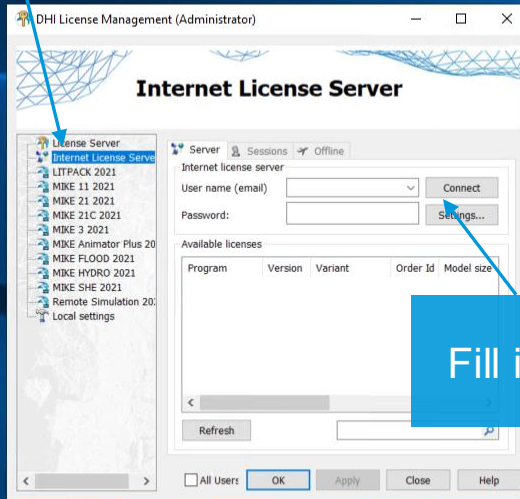
Settings, File Explorer, Mail, Photos, Music icons

DHI License

Find DHI License Management,
and have your MIKE Internet
license information ready at hand!

Windows taskbar with icons for Start, Search, Task View, Edge, File Explorer, and a running application.

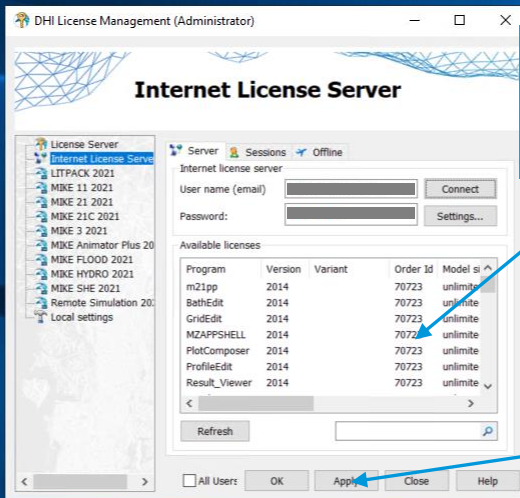
Now go to Internet License Server



Fill in your details and click 'Connect'



Recycle Bin



Your license information should soon appear here

Remember to click 'Apply' before you exit the License Manager

Powering WATER DECISIONS



Now you can open MIKE Zero and you're ready to model!
But what do you do when you're done with the VM?
Let's quickly go through the steps!

Open an Existing Project

Name	Created	Modified	Location
Sesupe_River	10/30/2020	10/30/2020	C:\Users\aug\OneDrive - DHI\Documents\MIKE\MIKE Zero\Projects\Sesupe_River

New Project Open Project Delete Project

Service & Maintenance (SMA)

EMBEDDING KNOWLEDGE IN TECHNOLOGY

Hotline SAAS FAQ Free tools

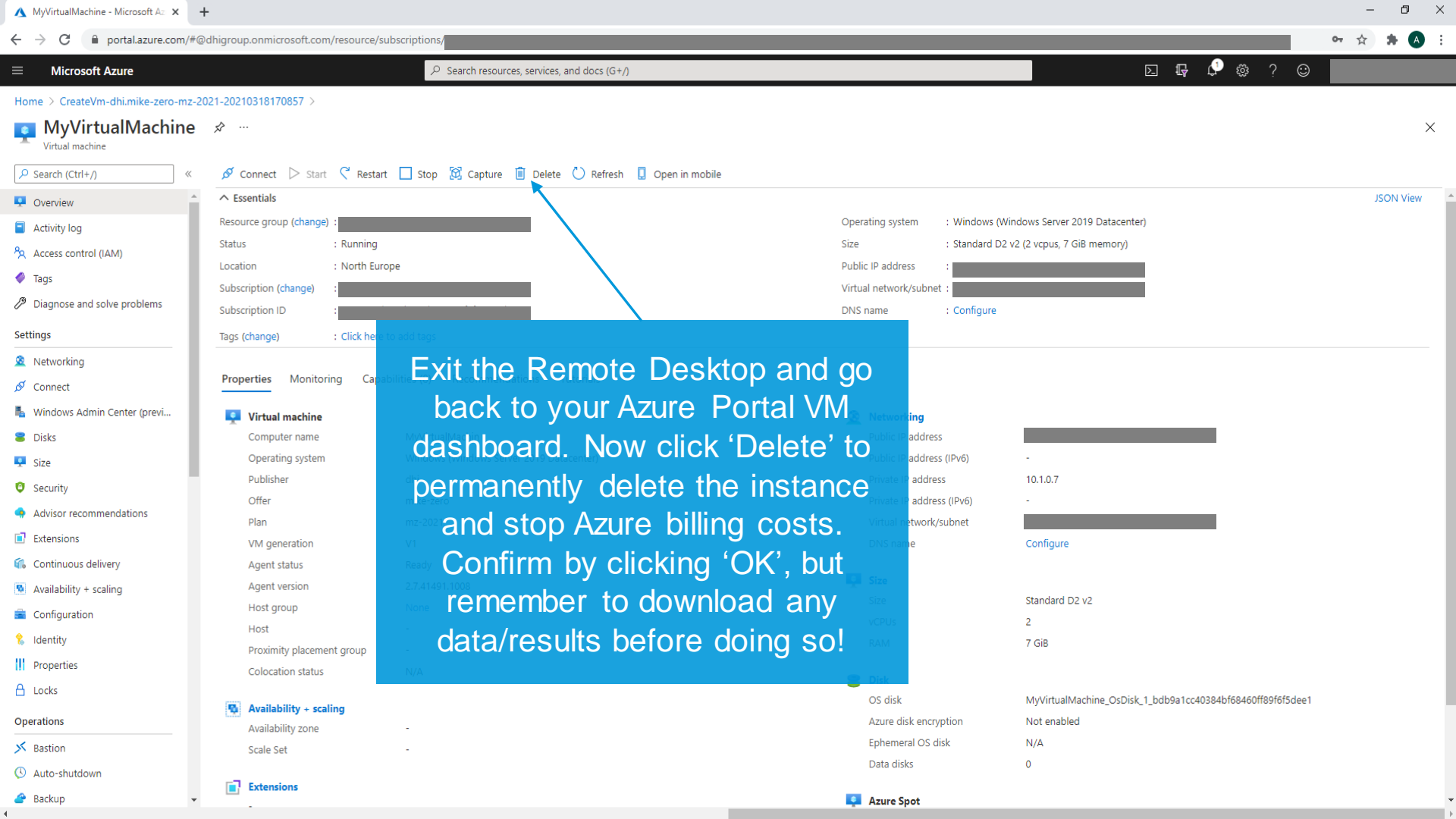
- MIKE Community
- Downloads
- Internet License Server Status

MIKE 2021 Release

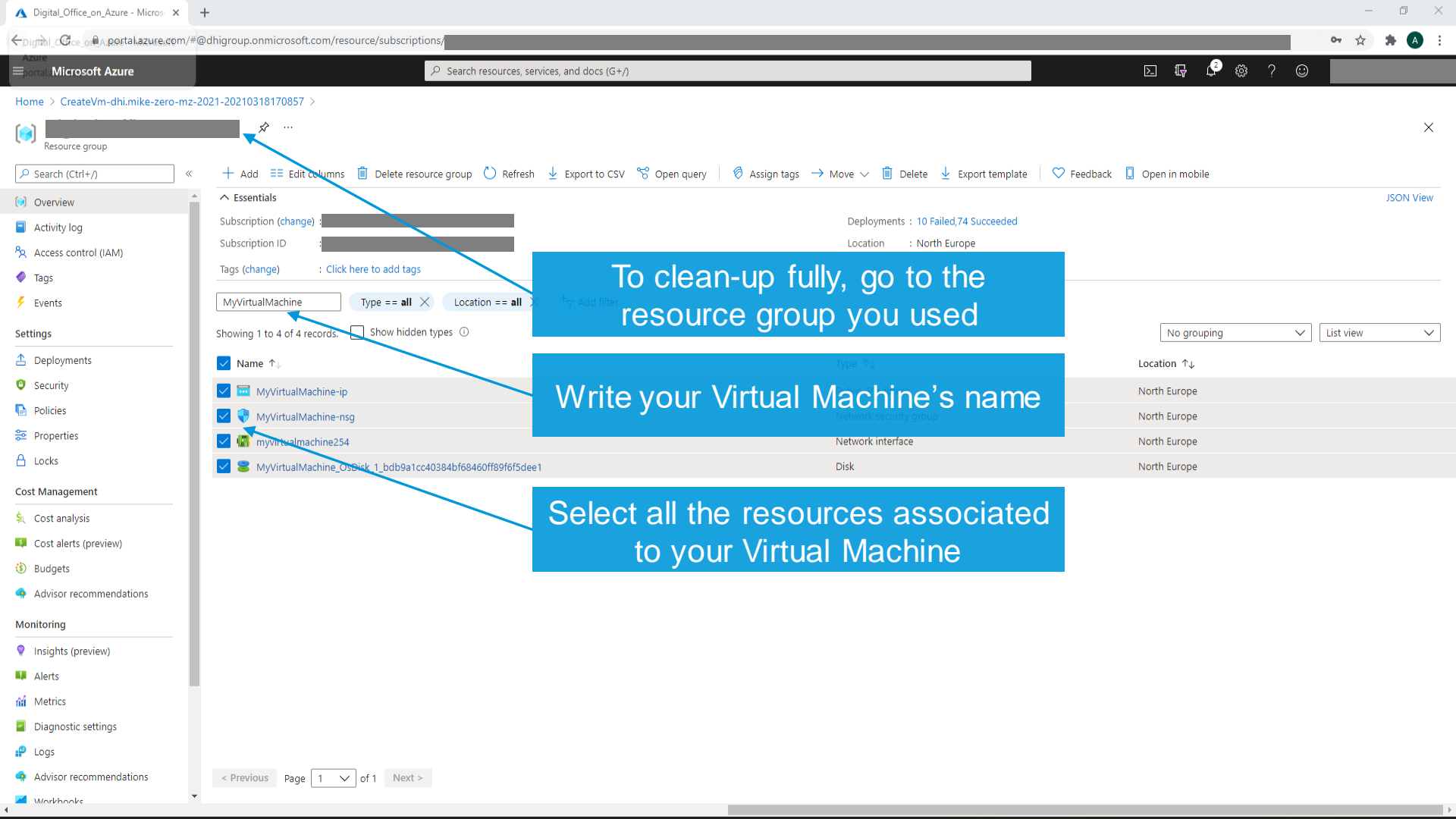
Upgrade your water modelling capabilities

Try now

- 1 day Webinar: Overview of process-based modelling applications using WEST 2D
 - 1 day Webinar: Using the free 30-day trial version of WEST 2D, a comprehensive software package which allows you to overcome the most challenging mining and groundwater related problems. The webinar will focus on the features of WEST 2D that can be used to implement a roughness and dewatering plan. Moreover, you'll learn how to accurately estimate dewatering volumes and how to estimate dewatering costs. There will be ample time for questions and answers. Time: 07:00-08:00 UTC
 - 1 day DHI New Zealand welcomes you to join this Engage Session in the new online format to talk about your MIKE Software and projects with our engineers and scientists and other industry colleagues in an informal seminar. We will have short presentations to start it off followed by a free format of conversations in topic based break-out rooms. Time: Wednesday, 24 March 2021, 11:00 am - 12:30 pm (NZT)
 - 24 Mar Webinar: Activated Sludge Process and Numerical Modelling: the concept of sludge retention time and applicability of WEST software
 - 1 day Among a diversity of biological processes for wastewater treatment, activated sludge is widely used in plants demanding a high treatment rate and presenting limited space available for their facilities. In this free 1-hour webinar in partnership with Sena e Frates, we will present some of the concepts involved in the operation of an activated sludge system, in addition to demonstrating how WWTP modelling can assist in parameter verification and optimization processes, focusing on sludge retention time. 15:00UTC
 - 25 Mar Webinar: Modelling of Wastewater Treatment Plants - Part 2: Optimization using WEST software - Module I: Total nitrogen in wastewater and process control
 - 1 day The increasing demand for more sustainable and economically viable processes has turned optimization strategies a challenge for many companies attempting to implement wastewater treatment systems. In this free webinar, you will learn how to utilize WEST software to optimize wastewater treatment processes. There will be ample time for questions and answers. Time: 07:00-08:00 UTC
- Discover all our training courses



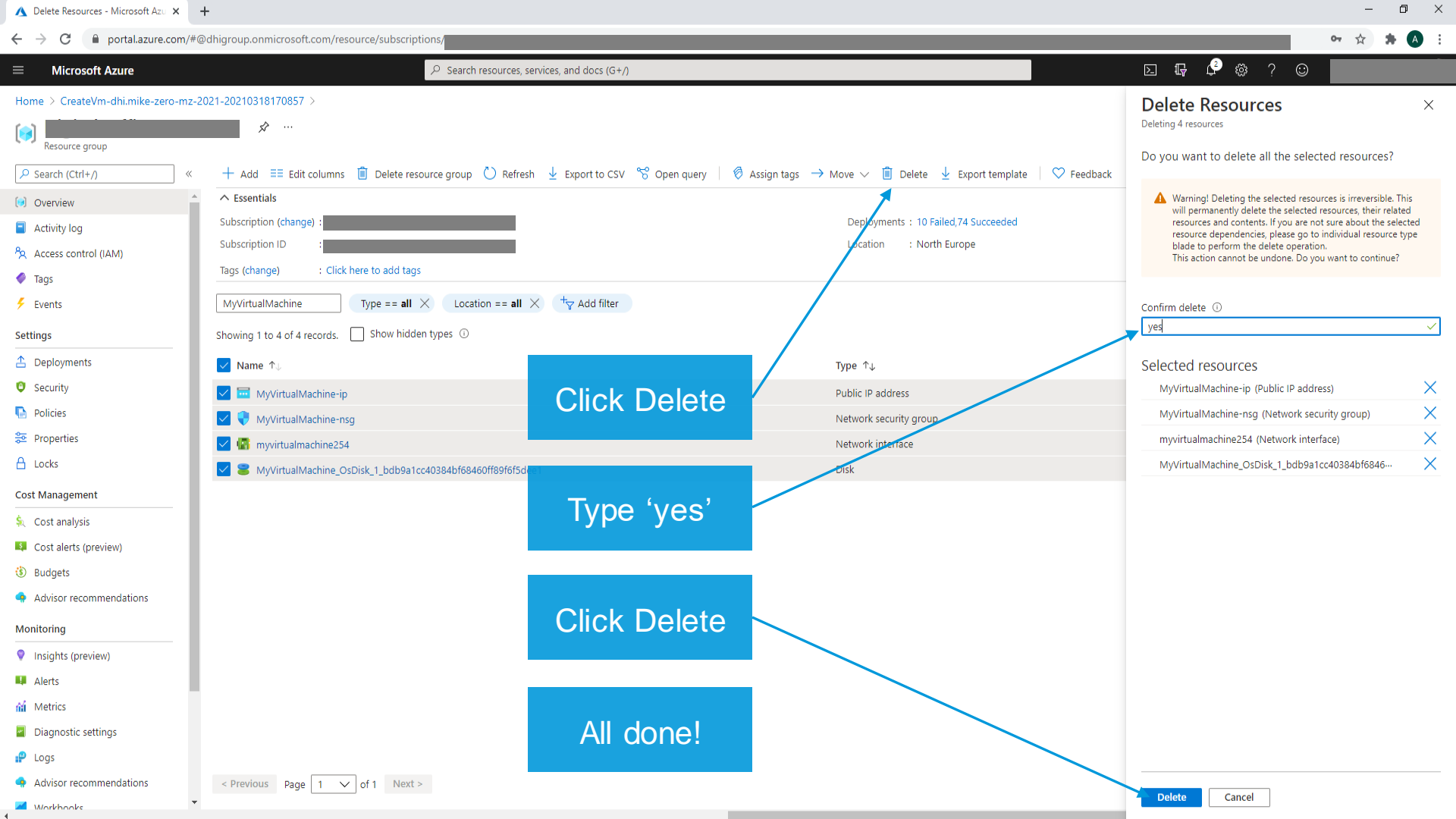
Exit the Remote Desktop and go back to your Azure Portal VM dashboard. Now click 'Delete' to permanently delete the instance and stop Azure billing costs. Confirm by clicking 'OK', but remember to download any data/results before doing so!



To clean-up fully, go to the resource group you used

Write your Virtual Machine's name

Select all the resources associated to your Virtual Machine



Delete Resources

Deleting 4 resources

Do you want to delete all the selected resources?

Warning! Deleting the selected resources is irreversible. This will permanently delete the selected resources, their related resources and contents. If you are not sure about the selected resource dependencies, please go to individual resource type blade to perform the delete operation. This action cannot be undone. Do you want to continue?

Confirm delete ⓘ

yes ✓

Selected resources

- MyVirtualMachine-ip (Public IP address) ✕
- MyVirtualMachine-nsg (Network security group) ✕
- myvirtualmachine254 (Network interface) ✕
- MyVirtualMachine_OsDisk_1_bdb9a1cc40384bf6846... ✕

Delete Cancel

Click Delete

Type 'yes'

Click Delete

All done!

Resource group

Search (Ctrl+/)

+ Add Edit columns Delete resource group Refresh Export to CSV Open query Assign tags Move Delete Export template Feedback

Essentials
Subscription (change) :
Subscription ID :
Tags (change) : Click here to add tags
Deployments : 10 Failed,74 Succeeded
Location : North Europe

MyVirtualMachine Type == all Location == all Add filter

Showing 1 to 4 of 4 records. Show hidden types

Name	Type
MyVirtualMachine-ip	Public IP address
MyVirtualMachine-nsg	Network security group
myvirtualmachine254	Network interface
MyVirtualMachine_OsDisk_1_bdb9a1cc40384bf68460ff89f6f5d...	Disk

- Overview
- Activity log
- Access control (IAM)
- Tags
- Events
- Settings
 - Deployments
 - Security
 - Policies
 - Properties
 - Locks
- Cost Management
 - Cost analysis
 - Cost alerts (preview)
 - Budgets
 - Advisor recommendations
- Monitoring
 - Insights (preview)
 - Alerts
 - Metrics
 - Diagnostic settings
 - Logs
 - Advisor recommendations

Thank you!